

October 2011 Accountability Pillar Overall Summary

Measure Category	Measure Category Evaluation	Measure	Ochre Park School			Alberta			Measure Evaluation		
			Current Result	Prev Year Result	Prev 3 yr Average	Current Result	Prev Year Result	Prev 3 Yr Average	Achievement	Improvement	Overall
Safe and Caring Schools	Excellent	Safe and Caring	98.5	95.5	94.7	88.1	87.6	86.6	Very High	Maintained	Excellent
Student Learning Opportunities	n/a	Program of Studies	98.4	89.2	84.3	80.9	80.5	80.1	Very High	Improved	Excellent
		Education Quality	97.1	94.4	91.8	89.4	89.2	88.9	Very High	Improved	Excellent
		Drop Out Rate	n/a	n/a	n/a	4.2	4.3	4.7	n/a	n/a	n/a
		High School Completion Rate (3 yr)	n/a	n/a	n/a	72.6	71.5	71.1	n/a	n/a	n/a
Student Learning Achievement (Grades K-9)	Good	PAT: Acceptable	100.0	96.4	93.3	79.3	79.1	78.0	Very High	Improved	Excellent
		PAT: Excellence	13.5	32.1	22.2	19.6	19.4	18.5	Intermediate	Maintained	Acceptable
Student Learning Achievement (Grades 10-12)	n/a	Diploma: Acceptable	n/a	n/a	n/a	82.6	83.4	84.0	n/a	n/a	n/a
		Diploma: Excellence	n/a	n/a	n/a	18.7	19.0	18.9	n/a	n/a	n/a
		Diploma Exam Participation Rate (4+ Exams)	n/a	n/a	n/a	54.9	53.5	53.5	n/a	n/a	n/a
		Rutherford Scholarship Eligibility Rate (Revised)	n/a	n/a	n/a	59.6	56.9	57.0	n/a	n/a	n/a
Preparation for Lifelong Learning, World of Work, Citizenship	n/a	Transition Rate (6 yr)	n/a	n/a	n/a	59.3	59.8	59.3	n/a	n/a	n/a
		Work Preparation	87.5	80.0	80.2	80.1	79.9	79.8	Very High	Maintained	Excellent
		Citizenship	94.7	89.6	90.7	81.9	81.4	79.9	Very High	Maintained	Excellent
Parental Involvement	Excellent	Parental Involvement	100.0	91.5	85.6	79.9	80.0	79.4	Very High	Improved	Excellent
Continuous Improvement	Excellent	School Improvement	90.0	83.8	83.6	80.1	79.9	78.8	Very High	Maintained	Excellent

Notes:

1. PAT results are a weighted average of the percent meeting standards (Acceptable, Excellence) on Provincial Achievement Tests. The weights are the number of students enrolled in each course. Courses included: English Language Arts (Grades 3, 6, 9), Science (Grades 6, 9), French Language Arts (Grades 6, 9), Français (Grades 6, 9).
2. Diploma results are a weighted average of percent meeting standards (Acceptable, Excellence) on Diploma Examinations. The weights are the number of students writing the Diploma Examination for each course. Courses included: English Language Arts 30-1, English Language Arts 30-2, French Language Arts 30-1, Français 30-1, Pure Mathematics 30, Applied Mathematics 30, Biology 30, Science 30.
3. Overall evaluations can only be calculated if both improvement and achievement evaluations are available.
4. The subsequent pages include evaluations for each performance measure. If jurisdictions desire not to present this information for each performance measure in the subsequent pages, please include a reference to this overall summary page for each performance measure.
5. Data values have been suppressed where the number of students is less than 6. Suppression is marked with an asterisk (*).

Achievement Evaluation

Achievement evaluation is based upon a comparison of Current Year data to a set of standards which remain consistent over time. The Standards are calculated by taking the 3 year average of baseline data for each measure across all school jurisdictions and calculating the 5th, 25th, 75th and 95th percentiles. Once calculated, these standards remain in place from year to year to allow for consistent planning and evaluation.

The table below shows the range of values defining the 5 achievement evaluation levels for each measure.

Measure	Very Low	Low	Intermediate	High	Very High
Safe and Caring	0.00 - 77.62	77.62 - 81.05	81.05 - 84.50	84.50 - 88.03	88.03 - 100.00
Program of Studies	0.00 - 66.31	66.31 - 72.65	72.65 - 78.43	78.43 - 81.59	81.59 - 100.00
Education Quality	0.00 - 80.94	80.94 - 84.23	84.23 - 87.23	87.23 - 89.60	89.60 - 100.00
Drop Out Rate	100.00 - 9.40	9.40 - 6.90	6.90 - 4.27	4.27 - 2.79	2.79 - 0.00
High School Completion Rate (3 yr)	0.00 - 57.03	57.03 - 62.36	62.36 - 73.88	73.88 - 81.79	81.79 - 100.00
PAT: Acceptable	0.00 - 65.53	65.53 - 78.44	78.44 - 85.13	85.13 - 89.49	89.49 - 100.00
PAT: Excellence	0.00 - 9.19	9.19 - 11.96	11.96 - 17.99	17.99 - 22.45	22.45 - 100.00
Diploma: Acceptable	0.00 - 74.42	74.42 - 83.58	83.58 - 88.03	88.03 - 92.35	92.35 - 100.00
Diploma: Excellence	0.00 - 10.31	10.31 - 15.67	15.67 - 20.27	20.27 - 23.77	23.77 - 100.00
Diploma Exam Participation Rate (4+ Exams)	0.00 - 31.10	31.10 - 44.11	44.11 - 55.78	55.78 - 65.99	65.99 - 100.00
Rutherford Scholarship Eligibility Rate (Revised)	0.00 - 43.18	43.18 - 49.83	49.83 - 59.41	59.41 - 70.55	70.55 - 100.00
Transition Rate (6 yr)	0.00 - 39.80	39.80 - 46.94	46.94 - 56.15	56.15 - 68.34	68.34 - 100.00
Work Preparation	0.00 - 66.92	66.92 - 72.78	72.78 - 77.78	77.78 - 86.13	86.13 - 100.00
Citizenship	0.00 - 66.30	66.30 - 71.63	71.63 - 77.50	77.50 - 81.08	81.08 - 100.00
Parental Involvement	0.00 - 70.76	70.76 - 74.58	74.58 - 78.50	78.50 - 82.30	82.30 - 100.00
School Improvement	0.00 - 65.25	65.25 - 70.85	70.85 - 76.28	76.28 - 80.41	80.41 - 100.00

Notes:

- 1) For all measures except Drop Out Rate: The range of values at each evaluation level is interpreted as greater than or equal to the lower value, and less than the higher value. For the Very High evaluation level, values range from greater than or equal to the lower value to 100%.
- 2) Drop Out Rate measure: As "Drop-out Rate" is inverse to most measures (i.e. lower values are "better"), the range of values at each evaluation level is interpreted as greater than the lower value and less than or equal to the higher value. For the Very High evaluation level, values range from 0% to less than or equal to the higher value.

Improvement Table

For each jurisdiction, improvement evaluation consists of comparing the Current Year result for each measure with the previous three-year average. A chi-square statistical test is used to determine the significance of the improvement. This test takes into account the size of the jurisdiction in the calculation to make improvement evaluation fair across jurisdictions of different sizes.

The table below shows the definition of the 5 improvement evaluation levels based upon the chi-square result.

Evaluation Category	Chi-Square Range
Declined Significantly	3.84 + (current < previous 3-year average)
Declined	1.00 - 3.83 (current < previous 3-year average)
Maintained	less than 1.00
Improved	1.00 - 3.83 (current > previous 3-year average)
Improved Significantly	3.84 + (current > previous 3-year average)

Overall Evaluation Table

The overall evaluation combines the Achievement Evaluation and the Improvement Evaluation. The table below illustrates how the Achievement and Improvement evaluations are combined to get the overall evaluation.

Improvement	Achievement				
	Very High	High	Intermediate	Low	Very Low
Improved Significantly	Excellent	Good	Good	Good	Acceptable
Improved	Excellent	Good	Good	Acceptable	Issue
Maintained	Excellent	Good	Acceptable	Issue	Concern
Declined	Good	Acceptable	Issue	Issue	Concern
Declined Significantly	Acceptable	Issue	Issue	Concern	Concern

Category Evaluation

The category evaluation is an average of the Overall Evaluation of the measures that make up the category. For the purpose of the calculation, consider an Overall Evaluation of Excellent to be 2, Good to be 1, Acceptable to be 0, Issue to be -1, and Concern to be -2. The simple average (mean) of these values rounded to the nearest integer produces the Category Evaluation value. This is converted back to a colour using the same scale above (e.g. 2=Excellent, 1=Good, 0=Intermediate, -1=Issue, -2=Concern)

Achievement Evaluation

Achievement evaluation is based upon a comparison of Current Year data to a set of standards which remain consistent over time. The Standards are calculated by taking the 3 year average of baseline data for each measure across all school jurisdictions and calculating the 5th, 25th, 75th and 95th percentiles. Once calculated, these standards remain in place from year to year to allow for consistent planning and evaluation.

The table below shows the range of values defining the 5 achievement evaluation levels for each measure.

Measure	Very Low	Low	Intermediate	High	Very High
Safe and Caring	0.00 - 77.62	77.62 - 81.05	81.05 - 84.50	84.50 - 88.03	88.03 - 100.00
Program of Studies	0.00 - 66.31	66.31 - 72.65	72.65 - 78.43	78.43 - 81.59	81.59 - 100.00
Education Quality	0.00 - 80.94	80.94 - 84.23	84.23 - 87.23	87.23 - 89.60	89.60 - 100.00
Drop Out Rate	100.00 - 9.40	9.40 - 6.90	6.90 - 4.27	4.27 - 2.79	2.79 - 0.00
High School Completion Rate (3 yr)	0.00 - 57.03	57.03 - 62.36	62.36 - 73.88	73.88 - 81.79	81.79 - 100.00
PAT: Acceptable	0.00 - 65.53	65.53 - 78.44	78.44 - 85.13	85.13 - 89.49	89.49 - 100.00
PAT: Excellence	0.00 - 9.19	9.19 - 11.96	11.96 - 17.99	17.99 - 22.45	22.45 - 100.00
Diploma: Acceptable	0.00 - 74.42	74.42 - 83.58	83.58 - 88.03	88.03 - 92.35	92.35 - 100.00
Diploma: Excellence	0.00 - 10.31	10.31 - 15.67	15.67 - 20.27	20.27 - 23.77	23.77 - 100.00
Diploma Exam Participation Rate (4+ Exams)	0.00 - 31.10	31.10 - 44.11	44.11 - 55.78	55.78 - 65.99	65.99 - 100.00
Rutherford Scholarship Eligibility Rate (Revised)	0.00 - 43.18	43.18 - 49.83	49.83 - 59.41	59.41 - 70.55	70.55 - 100.00
Transition Rate (6 yr)	0.00 - 39.80	39.80 - 46.94	46.94 - 56.15	56.15 - 68.34	68.34 - 100.00
Work Preparation	0.00 - 66.92	66.92 - 72.78	72.78 - 77.78	77.78 - 86.13	86.13 - 100.00
Citizenship	0.00 - 66.30	66.30 - 71.63	71.63 - 77.50	77.50 - 81.08	81.08 - 100.00
Parental Involvement	0.00 - 70.76	70.76 - 74.58	74.58 - 78.50	78.50 - 82.30	82.30 - 100.00
School Improvement	0.00 - 65.25	65.25 - 70.85	70.85 - 76.28	76.28 - 80.41	80.41 - 100.00

Notes:

- For all measures except Drop Out Rate: The range of values at each evaluation level is interpreted as greater than or equal to the lower value, and less than the higher value. For the Very High evaluation level, values range from greater than or equal to the lower value to 100%.
- Drop Out Rate measure: As "Drop-out Rate" is inverse to most measures (i.e. lower values are "better"), the range of values at each evaluation level is interpreted as greater than the lower value and less than or equal to the higher value. For the Very High evaluation level, values range from 0% to less than or equal to the higher value.

Improvement Table

For each jurisdiction, improvement evaluation consists of comparing the Current Year result for each measure with the previous three-year average. A chi-square statistical test is used to determine the significance of the improvement. This test takes into account the size of the jurisdiction in the calculation to make improvement evaluation fair across jurisdictions of different sizes.

The table below shows the definition of the 5 improvement evaluation levels based upon the chi-square result.

Evaluation Category	Chi-Square Range
Declined Significantly	3.84 + (current < previous 3-year average)
Declined	1.00 - 3.83 (current < previous 3-year average)
Maintained	less than 1.00
Improved	1.00 - 3.83 (current > previous 3-year average)
Improved Significantly	3.84 + (current > previous 3-year average)

Overall Evaluation Table

The overall evaluation combines the Achievement Evaluation and the Improvement Evaluation. The table below illustrates how the Achievement and Improvement evaluations are combined to get the overall evaluation.

Improvement	Achievement				
	Very High	High	Intermediate	Low	Very Low
Improved Significantly	Excellent	Good	Good	Good	Acceptable
Improved	Excellent	Good	Good	Acceptable	Issue
Maintained	Excellent	Good	Acceptable	Issue	Concern
Declined	Good	Acceptable	Issue	Issue	Concern
Declined Significantly	Acceptable	Issue	Issue	Concern	Concern

Category Evaluation

The category evaluation is an average of the Overall Evaluation of the measures that make up the category. For the purpose of the calculation, consider an Overall Evaluation of Excellent to be 2, Good to be 1, Acceptable to be 0, Issue to be -1, and Concern to be -2. The simple average (mean) of these values rounded to the nearest integer produces the Category Evaluation value. This is converted back to a colour using the same scale above (e.g. 2=Excellent, 1=Good, 0=Intermediate, -1=Issue, -2=Concern)

Measure Evaluation Reference

Achievement Evaluation

Achievement evaluation is based upon a comparison of Current Year data to a set of standards which remain consistent over time. The Standards are calculated by taking the 3 year average of baseline data for each measure across all school jurisdictions and calculating the 5th, 25th, 75th and 95th percentiles. Once calculated, these standards remain in place from year to year to allow for consistent planning and evaluation.

The table below shows the range of values defining the 5 achievement evaluation levels for each measure.

Measure	Very Low	Low	Intermediate	High	Very High
Safe and Caring	0.00 - 77.62	77.62 - 81.05	81.05 - 84.50	84.50 - 88.03	88.03 - 100.00
Program of Studies	0.00 - 66.31	66.31 - 72.65	72.65 - 78.43	78.43 - 81.59	81.59 - 100.00
Education Quality	0.00 - 80.94	80.94 - 84.23	84.23 - 87.23	87.23 - 89.60	89.60 - 100.00
Drop Out Rate	100.00 - 9.40	9.40 - 6.90	6.90 - 4.27	4.27 - 2.79	2.79 - 0.00
High School Completion Rate (3 yr)	0.00 - 57.03	57.03 - 62.36	62.36 - 73.88	73.88 - 81.79	81.79 - 100.00
PAT: Acceptable	0.00 - 65.53	65.53 - 78.44	78.44 - 85.13	85.13 - 89.49	89.49 - 100.00
PAT: Excellence	0.00 - 9.19	9.19 - 11.96	11.96 - 17.99	17.99 - 22.45	22.45 - 100.00
Diploma: Acceptable	0.00 - 74.42	74.42 - 83.58	83.58 - 88.03	88.03 - 92.35	92.35 - 100.00
Diploma: Excellence	0.00 - 10.31	10.31 - 15.67	15.67 - 20.27	20.27 - 23.77	23.77 - 100.00
Diploma Exam Participation Rate (4+ Exams)	0.00 - 31.10	31.10 - 44.11	44.11 - 55.78	55.78 - 65.99	65.99 - 100.00
Rutherford Scholarship Eligibility Rate (Revised)	0.00 - 43.18	43.18 - 49.83	49.83 - 59.41	59.41 - 70.55	70.55 - 100.00
Transition Rate (6 yr)	0.00 - 39.80	39.80 - 46.94	46.94 - 56.15	56.15 - 68.34	68.34 - 100.00
Work Preparation	0.00 - 66.92	66.92 - 72.78	72.78 - 77.78	77.78 - 86.13	86.13 - 100.00
Citizenship	0.00 - 66.30	66.30 - 71.63	71.63 - 77.50	77.50 - 81.08	81.08 - 100.00
Parental Involvement	0.00 - 70.76	70.76 - 74.58	74.58 - 78.50	78.50 - 82.30	82.30 - 100.00
School Improvement	0.00 - 65.25	65.25 - 70.85	70.85 - 76.28	76.28 - 80.41	80.41 - 100.00

Notes:

- For all measures except Drop Out Rate: The range of values at each evaluation level is interpreted as greater than or equal to the lower value, and less than the higher value. For the Very High evaluation level, values range from greater than or equal to the lower value to 100%.
- Drop Out Rate measure: As "Drop-out Rate" is inverse to most measures (i.e. lower values are "better"), the range of values at each evaluation level is interpreted as greater than the lower value and less than or equal to the higher value. For the Very High evaluation level, values range from 0% to less than or equal to the higher value.

Improvement Table

For each jurisdiction, improvement evaluation consists of comparing the Current Year result for each measure with the previous three-year average. A chi-square statistical test is used to determine the significance of the improvement. This test takes into account the size of the jurisdiction in the calculation to make improvement evaluation fair across jurisdictions of different sizes.

The table below shows the definition of the 5 improvement evaluation levels based upon the chi-square result.

Evaluation Category	Chi-Square Range
Declined Significantly	3.84 + (current < previous 3-year average)
Declined	1.00 - 3.83 (current < previous 3-year average)
Maintained	less than 1.00
Improved	1.00 - 3.83 (current > previous 3-year average)
Improved Significantly	3.84 + (current > previous 3-year average)

Overall Evaluation Table

The overall evaluation combines the Achievement Evaluation and the Improvement Evaluation. The table below illustrates how the Achievement and Improvement evaluations are combined to get the overall evaluation.

Improvement	Achievement				
	Very High	High	Intermediate	Low	Very Low
Improved Significantly	Excellent	Good	Good	Good	Acceptable
Improved	Excellent	Good	Good	Acceptable	Issue
Maintained	Excellent	Good	Acceptable	Issue	Concern
Declined	Good	Acceptable	Issue	Issue	Concern
Declined Significantly	Acceptable	Issue	Issue	Concern	Concern

Category Evaluation

The category evaluation is an average of the Overall Evaluation of the measures that make up the category. For the purpose of the calculation, consider an Overall Evaluation of Excellent to be 2, Good to be 1, Acceptable to be 0, Issue to be -1, and Concern to be -2. The simple average (mean) of these values rounded to the nearest integer produces the Category Evaluation value. This is converted back to a colour using the same scale above (e.g. 2=Excellent, 1=Good, 0=Intermediate, -1=Issue, -2=Concern)

Goal One: Success for Every Student

Outcome: *Students demonstrate proficiency in literacy and numeracy*

Note – This outcome replaces the following outcome from the 2010/11 – 2012/13 three year education plan:

- Students demonstrate high standards in learner outcomes (K-9 portion only)*

Performance Measure	Results (in percentages)					Target ¹	Evaluation			Targets ²		
	2007	2008	2009	2010	2011	2011	Achievement	Improvement	Overall	2012	2013	2014
Overall percentage of students in Grades 3, 6 and 9 who achieved the acceptable standard on Provincial Achievement Tests (overall cohort results).	96.8	91.5	92.1	96.4	100.0		Very High	Improved	Excellent			
Overall percentage of students in Grades 3, 6 and 9 who achieved the standard of excellence on Provincial Achievement Tests (overall cohort results).	12.9	21.3	13.2	32.1	13.5		Intermediate	Maintained	Acceptable			

Comment on Results

(an assessment of progress toward achieving the target)

Strategies

Notes:

- Aggregated PAT results are based upon a weighted average of percent meeting standards (Acceptable, Excellence). The weights are the number of students enrolled in each course. Courses included: English Language Arts (Grades 3, 6, 9), Science (Grades 6, 9), French Language Arts (Grades 6, 9), Français (Grades 6, 9). The percentages achieving the acceptable standard include the percentages achieving the standard of excellence.
- Data values have been suppressed where the number of students is less than 6. Suppression is marked with an asterisk (*).

¹ If school had set a target for 2010/11 in the three year education plan 2010/11 – 2012/13, it may be included in the space provided.

² If school had set targets for 2010/11 – 2012/13, it may be included in the space provided.

Outcome: *Students achieve educational outcomes*

Note – This outcome combines the following outcomes from the 2010/11 – 2012/13 three year education plan:

- *Students demonstrate high standards in learner outcomes (high school portion only)*
- *High school completion rates are showing continual improvement*
- *Children and youth with at risk factors have their needs addressed through timely and effective programs and supports*
- *Students are well prepared for lifelong learning*

[No Data for Diploma Exam Results]

Performance Measure	Results (in percentages)					Target	Evaluation			Targets		
	2006	2007	2008	2009	2010	2011	Achievement	Improvement	Overall	2012	2013	2014
High School Completion Rate - percentages of students who completed high school within three years of entering Grade 10.	n/a	n/a	n/a	n/a	n/a		n/a	n/a	n/a			
Drop Out Rate - annual dropout rate of students aged 14 to 18	*	*	*	*	*		n/a	n/a	n/a			
High school to post-secondary transition rate of students within six years of entering Grade 10.	n/a	n/a	n/a	n/a	n/a		n/a	n/a	n/a			
Percentage of Grade 12 students eligible for a Rutherford Scholarship.	*	*	*	*	*		n/a	n/a	n/a			
Percentage of students writing four or more diploma exams within three years of entering Grade 10.	*	*	*	*	*		n/a	n/a	n/a			

Comment on Results

(an assessment of progress toward achieving the target)

Strategies

Notes:

1. Aggregated Diploma results are a weighted average of percent meeting standards (Acceptable, Excellence) on Diploma Examinations. The weights are the number of students writing the Diploma Examination for each course. Courses included: English Language Arts 30-1, English Language Arts 30-2, French Language Arts 30-1, Français 30-1, Pure Mathematics 30, Applied Mathematics 30, Biology 30, Science 30. The percentages achieving the acceptable standard include the percentages achieving the standard of excellence.
2. Diploma Examination Participation, High School Completion and High school to Post-secondary Transition rates are based upon a cohort of grade 10 students who are tracked over time.
3. Please note that the rules for Rutherford Scholarships changed in 2008, which increased the number of students eligible for Rutherford Scholarships. The history for the measure has been re-computed to allow for trends to be identified.
4. Data values have been suppressed where the number of students is less than 6. Suppression is marked with an asterisk (*).

Outcome: *Students are prepared for the 21st century*

Note – This outcome combines the following outcomes from the 2010/11 – 2012/13 three year education plan:

- *Students model the characteristics of active citizenship*
- *Students are well prepared for employment*

Performance Measure	Results (in percentages)					Target	Evaluation			Targets		
	2007	2008	2009	2010	2011	2011	Achievement	Improvement	Overall	2012	2013	2014
Percentages of teachers, parents and students who are satisfied that students model the characteristics of active citizenship.	86.2	89.8	92.7	89.6	94.7		Very High	Maintained	Excellent			
Percentages of teachers and parents who agree that students are taught attitudes and behaviours that will make them successful at work when they finish school.	67.7	88.3	72.2	80.0	87.5		Very High	Maintained	Excellent			

Comment on Results

(an assessment of progress toward achieving the target)

Strategies

Note: Data values have been suppressed where the number of respondents is less than 6. Suppression is marked with an asterisk (*).

Goal Two: Transformed Education Through Collaboration

Outcome: *Students have access to programming and supports to enable their learning*

Note – This outcome combines the following outcomes from the 2010/11 – 2012/13 three year education plan:

- The education system meets the needs of all K–12 students and supports our society and the economy*
- School environments are safe and caring*

Performance Measure	Results (in percentages)					Target 2011	Evaluation			Targets		
	2007	2008	2009	2010	2011		Achievement	Improvement	Overall	2012	2013	2014
Percentage of teachers, parents and students satisfied with the opportunity for students to receive a broad program of studies including fine arts, career, technology, and health and physical education.	80.5	79.8	83.8	89.2	98.4		Very High	Improved	Excellent			
Percentage of teachers, parents and students satisfied with the overall quality of basic education.	82.0	92.6	88.3	94.4	97.1		Very High	Improved	Excellent			
Percentage of teacher, parent and student agreement that: students are safe at school, are learning the importance of caring for others, are learning respect for others and are treated fairly in school.	87.9	92.5	96.1	95.5	98.5		Very High	Maintained	Excellent			

Comment on Results

(an assessment of progress toward achieving the target)

Strategies

Note: Data values have been suppressed where the number of respondents is less than 6. Suppression is marked with an asterisk (*).

Outcome: *The education system demonstrates openness to new and innovative ideas, leadership and collaboration*

Note – This outcome combines the following outcomes from the 2010/11 – 2012/13 three year education plan:

- *The jurisdiction demonstrates effective working relationships*
- *The jurisdiction demonstrates leadership, innovation and continuous improvement*

Performance Measure	Results (in percentages)					Target	Evaluation			Targets		
	2007	2008	2009	2010	2011	2011	Achievement	Improvement	Overall	2012	2013	2014
Percentage of teachers and parents satisfied with parental involvement in decisions about their child's education.	82.9	86.7	78.7	91.5	100.0		Very High	Improved	Excellent			
Percentages of teachers, parents and students indicating that their school and schools in their jurisdiction have improved or stayed the same the last three years.	71.1	81.4	85.6	83.8	90.0		Very High	Maintained	Excellent			

Comment on Results

(an assessment of progress toward achieving the target)

Strategies

Note: Data values have been suppressed where the number of respondents is less than 6. Suppression is marked with an asterisk (*).

APPENDIX – Measure Details

The following pages include tables and graphs that provide detailed data for the performance measures. Schools may include these under each measure/outcome to provide context and help in interpreting the results.

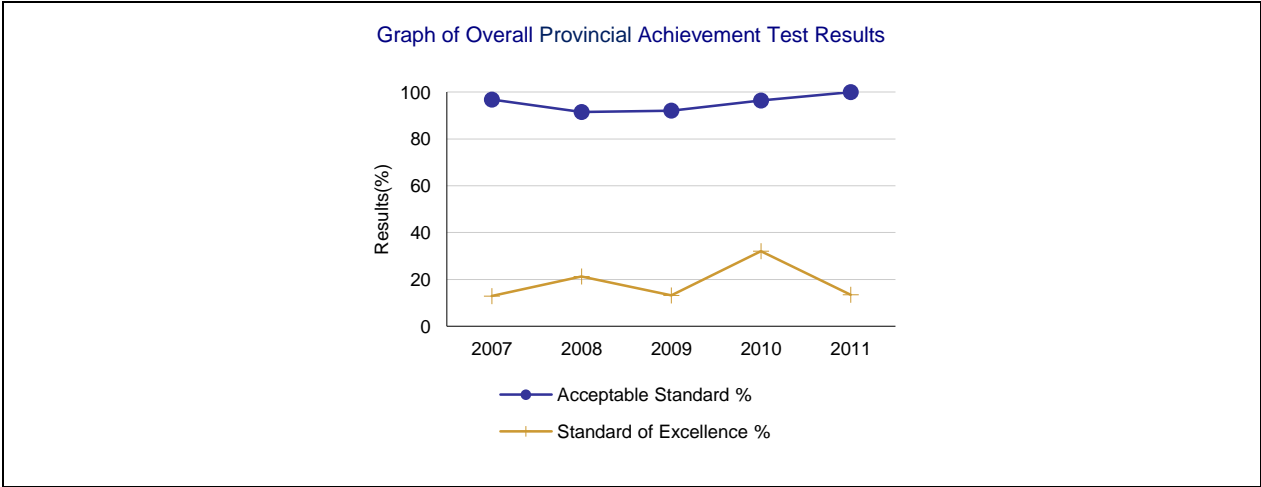
Provincial Achievement Test Results – Measure Details

PAT Course by Course Results by Number Enrolled.													
		Results (in percentages)										Target	
		2007		2008		2009		2010		2011		2011	
		A	E	A	E	A	E	A	E	A	E	A	E
English Language Arts 3	School	96.8	12.9	91.5	21.3	92.1	13.2	96.4	32.1	100.0	13.5		
	Authority	89.2	18.7	91.1	19.2	88.0	16.1	90.7	17.9	91.6	15.3		
	Province	80.3	17.7	80.1	16.1	81.3	18.2	81.6	19.5	81.8	17.5		
French Language Arts 3	School	n/a	n/a	n/a	n/a	n/a	n/a	n/a	n/a	n/a	n/a		
	Authority	n/a	n/a	n/a	n/a	n/a	n/a	n/a	n/a	n/a	n/a		
	Province	n/a	n/a	n/a	n/a	83.8	15.8	84.1	16.3	80.6	15.8		
Français 3	School	n/a	n/a	n/a	n/a	n/a	n/a	n/a	n/a	n/a	n/a		
	Authority	n/a	n/a	n/a	n/a	n/a	n/a	n/a	n/a	n/a	n/a		
	Province	n/a	n/a	n/a	n/a	82.5	16.3	86.4	16.3	84.2	18.6		
Mathematics 3	School	n/a	n/a	n/a	n/a	n/a	n/a	n/a	n/a	94.6	24.3		
	Authority	n/a	n/a	n/a	n/a	n/a	n/a	n/a	n/a	87.6	26.2		
	Province	n/a	n/a	n/a	n/a	n/a	n/a	n/a	n/a	77.4	26.0		
English Language Arts 6	School	n/a	n/a	n/a	n/a	n/a	n/a	n/a	n/a	n/a	n/a		
	Authority	87.7	25.5	88.7	26.5	88.7	19.1	89.1	20.2	87.1	19.2		
	Province	80.3	19.8	81.1	21.0	81.8	18.9	83.3	18.9	83.0	18.5		
French Language Arts 6	School	n/a	n/a	n/a	n/a	n/a	n/a	n/a	n/a	n/a	n/a		
	Authority	n/a	n/a	n/a	n/a	n/a	n/a	n/a	n/a	n/a	n/a		
	Province	88.1	11.0	87.7	14.2	91.5	15.9	88.3	15.9	89.4	17.1		
Français 6	School	n/a	n/a	n/a	n/a	n/a	n/a	n/a	n/a	n/a	n/a		
	Authority	n/a	n/a	n/a	n/a	n/a	n/a	n/a	n/a	n/a	n/a		
	Province	93.0	18.0	94.3	17.1	92.6	18.7	91.3	18.3	92.2	17.6		
Mathematics 6	School	n/a	n/a	n/a	n/a	n/a	n/a	n/a	n/a	n/a	n/a		
	Authority	n/a	n/a	n/a	n/a	n/a	n/a	n/a	n/a	77.5	15.2		
	Province	n/a	n/a	n/a	n/a	n/a	n/a	n/a	n/a	73.7	17.8		
Science 6	School	n/a	n/a	n/a	n/a	n/a	n/a	n/a	n/a	n/a	n/a		
	Authority	85.3	35.0	85.5	34.5	85.4	29.1	85.1	30.4	80.4	28.6		
	Province	75.2	26.6	74.8	24.1	76.5	24.8	76.8	26.4	76.2	25.0		
Social Studies 6	School	n/a	n/a	n/a	n/a	n/a	n/a	n/a	n/a	n/a	n/a		
	Authority	n/a	n/a	n/a	n/a	n/a	n/a	75.5	18.3	78.1	19.2		
	Province	n/a	n/a	n/a	n/a	n/a	n/a	71.0	16.4	71.1	18.5		
English Language Arts 9	School	n/a	n/a	n/a	n/a	n/a	n/a	n/a	n/a	n/a	n/a		
	Authority	83.0	16.2	88.0	17.7	87.2	13.2	89.9	17.3	85.0	19.2		
	Province	77.5	14.8	76.5	14.8	78.7	14.7	79.3	15.0	79.1	16.3		
English Lang Arts 9 KAE	School	n/a	n/a	n/a	n/a	n/a	n/a	n/a	n/a	n/a	n/a		
	Authority	n/a	n/a	n/a	n/a	n/a	n/a	91.2	17.6	83.3	16.7		
	Province	n/a	n/a	n/a	n/a	n/a	n/a	66.8	7.8	67.2	7.9		
French Language Arts 9	School	n/a	n/a	n/a	n/a	n/a	n/a	n/a	n/a	n/a	n/a		
	Authority	n/a	n/a	n/a	n/a	n/a	n/a	n/a	n/a	n/a	n/a		
	Province	81.3	12.9	84.5	12.4	81.8	10.3	86.1	12.4	88.8	15.0		
Français 9	School	n/a	n/a	n/a	n/a	n/a	n/a	n/a	n/a	n/a	n/a		
	Authority	n/a	n/a	n/a	n/a	n/a	n/a	n/a	n/a	n/a	n/a		
	Province	81.6	12.6	84.8	11.7	85.6	12.9	84.3	12.7	90.2	15.8		
Mathematics 9	School	n/a	n/a	n/a	n/a	n/a	n/a	n/a	n/a	n/a	n/a		
	Authority	n/a	n/a	n/a	n/a	n/a	n/a	n/a	n/a	69.1	13.8		
	Province	n/a	n/a	n/a	n/a	n/a	n/a	n/a	n/a	66.1	17.3		
Mathematics 9 KAE	School	n/a	n/a	n/a	n/a	n/a	n/a	n/a	n/a	n/a	n/a		
	Authority	n/a	n/a	n/a	n/a	n/a	n/a	85.7	34.3	82.9	31.4		

	Province	n/a	n/a	n/a	n/a	n/a	n/a	65.6	15.3	64.9	14.9		
Science 9	School	n/a	n/a	n/a	n/a	n/a	n/a	n/a	n/a	n/a	n/a		
	Authority	75.9	12.2	83.4	16.3	79.9	14.1	80.6	21.5	81.8	24.4		
	Province	69.6	14.7	69.3	13.0	72.2	15.8	73.6	17.7	74.9	20.8		
Science 9 KAE	School	n/a	n/a	n/a	n/a	n/a	n/a	n/a	n/a	n/a	n/a		
	Authority	n/a	n/a	n/a	n/a	n/a	n/a	88.5	26.9	78.9	47.4		
	Province	n/a	n/a	n/a	n/a	n/a	n/a	67.2	14.3	69.5	15.3		
Social Studies 9	School	n/a	n/a	n/a	n/a	n/a	n/a	n/a	n/a	n/a	n/a		
	Authority	n/a	n/a	n/a	n/a	n/a	n/a	76.2	25.9	76.6	21.0		
	Province	n/a	n/a	n/a	n/a	n/a	n/a	68.9	18.8	67.2	19.0		
Social Studies 9 KAE	School	n/a	n/a	n/a	n/a	n/a	n/a	n/a	n/a	n/a	n/a		
	Authority	n/a	n/a	n/a	n/a	n/a	n/a	88.0	44.0	78.9	42.1		
	Province	n/a	n/a	n/a	n/a	n/a	n/a	64.6	15.7	61.9	13.6		

Note: Data values have been suppressed where the number of students is less than 6. Suppression is marked with an asterisk (*).

** "A" = Acceptable; "E" = Excellence — the percentages achieving the acceptable standard include the percentages achieving the standard of excellence.



Graph of Provincial Achievement Test Results by Course																			
<p>English Language Arts 3</p> <table border="1"> <caption>English Language Arts 3 Data</caption> <thead> <tr> <th>Year</th> <th>Acceptable Standard %</th> <th>Standard of Excellence %</th> </tr> </thead> <tbody> <tr> <td>2007</td> <td>95</td> <td>12</td> </tr> <tr> <td>2008</td> <td>90</td> <td>20</td> </tr> <tr> <td>2009</td> <td>90</td> <td>12</td> </tr> <tr> <td>2010</td> <td>95</td> <td>32</td> </tr> <tr> <td>2011</td> <td>100</td> <td>12</td> </tr> </tbody> </table>	Year	Acceptable Standard %	Standard of Excellence %	2007	95	12	2008	90	20	2009	90	12	2010	95	32	2011	100	12	<p>[No Data for French Language Arts 3]</p>
Year	Acceptable Standard %	Standard of Excellence %																	
2007	95	12																	
2008	90	20																	
2009	90	12																	
2010	95	32																	
2011	100	12																	
<p>[No Data for Français 3]</p>	<p>Mathematics 3</p> <table border="1"> <caption>Mathematics 3 Data</caption> <thead> <tr> <th>Year</th> <th>Acceptable Standard %</th> <th>Standard of Excellence %</th> </tr> </thead> <tbody> <tr> <td>2011</td> <td>95</td> <td>25</td> </tr> </tbody> </table>	Year	Acceptable Standard %	Standard of Excellence %	2011	95	25												
Year	Acceptable Standard %	Standard of Excellence %																	
2011	95	25																	
<p>[No Data for English Language Arts 6]</p>	<p>[No Data for French Language Arts 6]</p>																		

Note: Data values have been suppressed where the number of students is less than 6. Suppression is marked with an asterisk (*).

Graph of Provincial Achievement Test Results by Course	
[No Data for Français 6]	[No Data for Mathematics 6]
[No Data for Science 6]	[No Data for Social Studies 6]
[No Data for English Language Arts 9]	[No Data for English Lang Arts 9 KAE]

Note: Data values have been suppressed where the number of students is less than 6. Suppression is marked with an asterisk (*).

Graph of Provincial Achievement Test Results by Course	
[No Data for French Language Arts 9]	[No Data for Français 9]
[No Data for Mathematics 9]	[No Data for Mathematics 9 KAE]
[No Data for Science 9]	[No Data for Science 9 KAE]

Note: Data values have been suppressed where the number of students is less than 6. Suppression is marked with an asterisk (*).

Graph of Provincial Achievement Test Results by Course	
[No Data for Social Studies 9]	[No Data for Social Studies 9 KAE]

Note: Data values have been suppressed where the number of students is less than 6. Suppression is marked with an asterisk (*).

PAT Results Course By Course Summary By Enrolled With Measure Evaluation

Course	Measure	Ochre Park School							Alberta			
		Achievement	Improvement	Overall	2011		Prev 3 Yr Avg		2011		Prev 3 Yr Avg	
					N	%	N	%	N	%	N	%
English Language Arts 3	Acceptable Standard	Very High	Improved	Excellent	37	100.0	38	93.3	42,944	81.8	42,052	81.0
	Standard of Excellence	Intermediate	Maintained	Acceptable	37	13.5	38	22.2	42,944	17.5	42,052	17.9
French Language Arts 3	Acceptable Standard	n/a	n/a	n/a	n/a	n/a	n/a	n/a	3,180	80.6	3,046	83.9
	Standard of Excellence	n/a	n/a	n/a	n/a	n/a	n/a	n/a	3,180	15.8	3,046	16.1
Français 3	Acceptable Standard	n/a	n/a	n/a	n/a	n/a	n/a	n/a	532	84.2	520	84.4
	Standard of Excellence	n/a	n/a	n/a	n/a	n/a	n/a	n/a	532	18.6	520	16.3
English Language Arts 6	Acceptable Standard	n/a	n/a	n/a	n/a	n/a	n/a	n/a	43,433	83.0	43,646	82.1
	Standard of Excellence	n/a	n/a	n/a	n/a	n/a	n/a	n/a	43,433	18.5	43,646	19.6
French Language Arts 6	Acceptable Standard	n/a	n/a	n/a	n/a	n/a	n/a	n/a	2,635	89.4	2,307	89.2
	Standard of Excellence	n/a	n/a	n/a	n/a	n/a	n/a	n/a	2,635	17.1	2,307	15.3
Français 6	Acceptable Standard	n/a	n/a	n/a	n/a	n/a	n/a	n/a	460	92.2	442	92.7
	Standard of Excellence	n/a	n/a	n/a	n/a	n/a	n/a	n/a	460	17.6	442	18.0
Science 6	Acceptable Standard	n/a	n/a	n/a	n/a	n/a	n/a	n/a	43,441	76.2	43,534	76.0
	Standard of Excellence	n/a	n/a	n/a	n/a	n/a	n/a	n/a	43,441	25.0	43,534	25.1
Social Studies 6	Acceptable Standard	n/a	n/a	n/a	n/a	n/a	n/a	n/a	43,537	71.1	43,601	71.0
	Standard of Excellence	n/a	n/a	n/a	n/a	n/a	n/a	n/a	43,537	18.5	43,601	16.4
English Language Arts 9	Acceptable Standard	n/a	n/a	n/a	n/a	n/a	n/a	n/a	43,024	79.1	43,763	78.2
	Standard of Excellence	n/a	n/a	n/a	n/a	n/a	n/a	n/a	43,024	16.3	43,763	14.8
English Lang Arts 9 KAE	Acceptable Standard	n/a	n/a	n/a	n/a	n/a	n/a	n/a	1,606	67.2	1,587	66.8
	Standard of Excellence	n/a	n/a	n/a	n/a	n/a	n/a	n/a	1,606	7.9	1,587	7.8
French Language Arts 9	Acceptable Standard	n/a	n/a	n/a	n/a	n/a	n/a	n/a	2,331	88.8	2,324	84.1
	Standard of Excellence	n/a	n/a	n/a	n/a	n/a	n/a	n/a	2,331	15.0	2,324	11.7
Français 9	Acceptable Standard	n/a	n/a	n/a	n/a	n/a	n/a	n/a	336	90.2	324	84.9
	Standard of Excellence	n/a	n/a	n/a	n/a	n/a	n/a	n/a	336	15.8	324	12.4
Mathematics 9 KAE	Acceptable Standard	n/a	n/a	n/a	n/a	n/a	n/a	n/a	1,936	64.9	1,894	65.6
	Standard of Excellence	n/a	n/a	n/a	n/a	n/a	n/a	n/a	1,936	14.9	1,894	15.3
Science 9	Acceptable Standard	n/a	n/a	n/a	n/a	n/a	n/a	n/a	42,932	74.9	43,553	71.7
	Standard of Excellence	n/a	n/a	n/a	n/a	n/a	n/a	n/a	42,932	20.8	43,553	15.5
Science 9 KAE	Acceptable Standard	n/a	n/a	n/a	n/a	n/a	n/a	n/a	1,586	69.5	1,526	67.2
	Standard of Excellence	n/a	n/a	n/a	n/a	n/a	n/a	n/a	1,586	15.3	1,526	14.3
Social Studies 9	Acceptable Standard	n/a	n/a	n/a	n/a	n/a	n/a	n/a	43,128	67.2	43,769	68.9
	Standard of Excellence	n/a	n/a	n/a	n/a	n/a	n/a	n/a	43,128	19.0	43,769	18.8
Social Studies 9 KAE	Acceptable Standard	n/a	n/a	n/a	n/a	n/a	n/a	n/a	1,573	61.9	1,557	64.6
	Standard of Excellence	n/a	n/a	n/a	n/a	n/a	n/a	n/a	1,573	13.6	1,557	15.7

Note: Data values have been suppressed where the number of students is less than 6. Suppression is marked with an asterisk (*).

Achievement Evaluation is not calculated for courses that do not have sufficient data available, either due to too few jurisdictions offering the course or because of changes in tests.

Evaluations for Mathematics (Grades 3, 6, 9) are not calculated due to the changes in the tests in 2010.

Measure Evaluation Reference - Achievement Evaluation

Achievement evaluation is based upon a comparison of Current Year data to a set of standards which remain consistent over time. The Standards are calculated by taking the 3 year average of baseline data for each measure across all school jurisdictions and calculating the 5th, 25th, 75th, and 95th percentiles. Once calculated, these standards remain in place from year to year to allow for consistent planning and evaluation.

The table below shows the range of values defining the 5 achievement evaluation levels for each measure.

Course	Measure	Very Low	Low	Intermediate	High	Very High
English Language Arts 3	Acceptable Standard	0.00 - 72.53	72.53 - 80.49	80.49 - 89.12	89.12 - 93.04	93.04 - 100.00
	Standard of Excellence	0.00 - 6.06	6.06 - 11.35	11.35 - 16.93	16.93 - 20.27	20.27 - 100.00
English Language Arts 6	Acceptable Standard	0.00 - 67.95	67.95 - 78.40	78.40 - 86.09	86.09 - 91.37	91.37 - 100.00
	Standard of Excellence	0.00 - 6.83	6.83 - 11.65	11.65 - 17.36	17.36 - 22.46	22.46 - 100.00
French Language Arts 6	Acceptable Standard	0.00 - 41.69	41.69 - 73.54	73.54 - 92.32	92.32 - 97.93	97.93 - 100.00
	Standard of Excellence	0.00 - 2.72	2.72 - 8.13	8.13 - 15.29	15.29 - 23.86	23.86 - 100.00
Science 6	Acceptable Standard	0.00 - 60.36	60.36 - 78.51	78.51 - 86.46	86.46 - 90.64	90.64 - 100.00
	Standard of Excellence	0.00 - 11.74	11.74 - 17.42	17.42 - 25.34	25.34 - 34.31	34.31 - 100.00
English Language Arts 9	Acceptable Standard	0.00 - 63.55	63.55 - 75.66	75.66 - 83.70	83.70 - 90.27	90.27 - 100.00
	Standard of Excellence	0.00 - 5.96	5.96 - 9.43	9.43 - 14.72	14.72 - 20.46	20.46 - 100.00
French Language Arts 9	Acceptable Standard	0.00 - 67.59	67.59 - 81.33	81.33 - 92.06	92.06 - 97.26	97.26 - 100.00
	Standard of Excellence	0.00 - 1.67	1.67 - 6.81	6.81 - 17.11	17.11 - 28.68	28.68 - 100.00
Science 9	Acceptable Standard	0.00 - 50.57	50.57 - 60.14	60.14 - 72.50	72.50 - 76.89	76.89 - 100.00
	Standard of Excellence	0.00 - 3.39	3.39 - 6.71	6.71 - 11.81	11.81 - 15.85	15.85 - 100.00

Notes:

The range of values at each evaluation level is interpreted as greater than or equal to the lower value, and less than the higher value. For the Very High evaluation level, values range from greater than or equal to the lower value to 100%.

Achievement Evaluation is not calculated for courses that do not have sufficient data available, either due to too few jurisdictions offering the course or because of changes in tests.

Evaluations for Mathematics (Grades 3, 6, 9) are not calculated due to the changes in the tests in 2010.

Improvement Table

For each jurisdiction, improvement evaluation consists of comparing the Current Year result for each measure with the previous three-year average. A chi-square statistical test is used to determine the significance of the improvement. This test takes into account the size of the jurisdiction in the calculation to make improvement evaluation fair across jurisdictions of different sizes.

The table below shows the definition of the 5 improvement evaluation levels based upon the chi-square result.

Evaluation Category	Chi-Square Range
Declined Significantly	3.84 + (current < previous 3-year average)
Declined	1.00 - 3.83 (current < previous 3-year average)
Maintained	less than 1.00
Improved	1.00 - 3.83 (current > previous 3-year average)
Improved Significantly	3.84 + (current > previous 3-year average)

Overall Evaluation Table

The overall evaluation combines the Achievement Evaluation and the Improvement Evaluation. The table below illustrates how the Achievement and Improvement evaluations are combined to get the overall evaluation.

	Achievement				
	Very High	High	Intermediate	Low	Very Low
Improved Significantly	Excellent	Good	Good	Good	Acceptable
Improved	Excellent	Good	Good	Acceptable	Issue
Maintained	Excellent	Good	Acceptable	Issue	Concern
Declined	Good	Acceptable	Issue	Issue	Concern
Declined Significantly	Acceptable	Issue	Issue	Concern	Concern

Diploma Examination Results – Measure Details

[No Data for Diploma Exam Results]

Note: Data values have been suppressed where the number of students is less than 6. Suppression is marked with an asterisk (*).

** "A" = Acceptable; "E" = Excellence — the percentages achieving the acceptable standard include the percentages achieving the standard of excellence.

Graph of Diploma Examination Results – Overall

[No Data for Diploma Exam Results]

Diploma Examination Results by Course	
[No Data for English Lang Arts 30-1]	[No Data for English Lang Arts 30-2]
[No Data for French Lang Arts 30-1]	[No Data for Français 30]
[No Data for Pure Mathematics 30]	[No Data for Applied Mathematics 30]

Note: Data values have been suppressed where the number of students is less than 6. Suppression is marked with an asterisk (*).

Diploma Examination Results by Course	
[No Data for Social Studies 30]	[No Data for Social Studies 30-1]
[No Data for Social Studies 33]	[No Data for Social Studies 30-2]
[No Data for Biology 30]	[No Data for Chemistry 30 Old]

Note: Data values have been suppressed where the number of students is less than 6. Suppression is marked with an asterisk (*).

Diploma Examination Results by Course	
[No Data for Chemistry 30]	[No Data for Physics 30 Old]
[No Data for Physics 30]	[No Data for Science 30]

Note: Data values have been suppressed where the number of students is less than 6. Suppression is marked with an asterisk (*).

Diploma Examination Results Course By Course Summary With Measure Evaluation

[No Data for Diploma Exam Results]

Note: Data values have been suppressed where the number of students is less than 6. Suppression is marked with an asterisk (*).

Achievement Evaluation is not calculated for courses that do not have sufficient data available, either due to too few jurisdictions offering the course or because of changes in examinations.

Measure Evaluation Reference - Achievement Evaluation

Achievement evaluation is based upon a comparison of Current Year data to a set of standards which remain consistent over time. The Standards are calculated by taking the 3 year average of baseline data for each measure across all school jurisdictions and calculating the 5th, 25th, 75th, and 95th percentiles. Once calculated, these standards remain in place from year to year to allow for consistent planning and evaluation.

The table below shows the range of values defining the 5 achievement evaluation levels for each measure.

[No Data for PAT Achievement Evaluation Reference]

Notes:

The range of values at each evaluation level is interpreted as greater than or equal to the lower value, and less than the higher value. For the Very High category, values range from greater than or equal to the lower value to 100%.

Achievement Evaluation is not calculated for courses that do not have sufficient data available, either due to too few jurisdictions offering the course or because of changes in examinations.

Improvement Table

For each jurisdiction, improvement evaluation consists of comparing the Current Year result for each measure with the previous three-year average. A chi-square statistical test is used to determine the significance of the improvement. This test takes into account the size of the jurisdiction in the calculation to make improvement evaluation fair across jurisdictions of different sizes.

The table below shows the definition of the 5 improvement evaluation levels based upon the chi-square result.

[No Data for PAT Improvement Reference]

Overall Evaluation Table

The overall evaluation combines the Achievement Evaluation and the Improvement Evaluation. The table below illustrates how the Achievement and Improvement evaluations are combined to get the overall evaluation.

[No Data for PAT Overall Evaluation Reference]

High School Completion Rate – Measure Details

[No Data for High School Completion Rate]

<p>Graph of School Results</p> <p>[No Data for High School Completion Rate]</p>	<p>Graph of School Results</p> <p>[No Data for High School Completion Rate]</p>
<p>Graph of School Results</p> <p>[No Data for High School Completion Rate]</p>	

Note: Data values have been suppressed where the number of respondents is less than 6. Suppression is marked with an asterisk (*).

Drop Out Rate – Measure Details

[No Data for Dropout Rate]

<p>Graph of School Results</p> <p>[No Data for Dropout Rate]</p>	<p>Graph of School Results</p> <p>[No Data for Returning Rate]</p>
--	--

Note: Data values have been suppressed where the number of respondents is less than 6. Suppression is marked with an asterisk (*).

High School to Post-secondary Transition Rate – Measure Details

[No Data for High School to Post-Secondary Transition Rate]

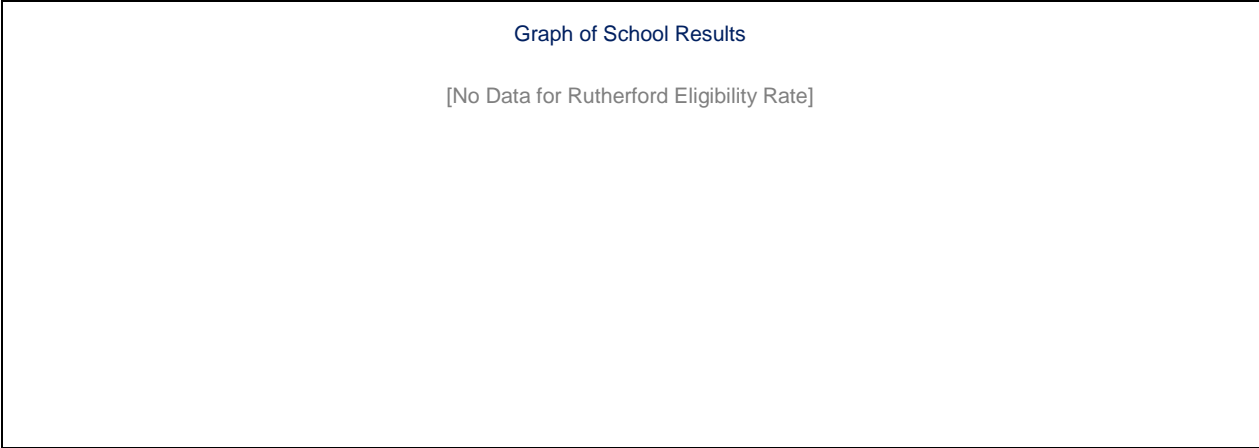
<p style="text-align: center;">Graph of School Results</p> <p>[No Data for High School to Post-Secondary Transition Rate]</p>	<p style="text-align: center;">Graph of School Results</p> <p>[No Data for High School to Post-Secondary Transition Rate]</p>
---	---

Note: Data values have been suppressed where the number of respondents is less than 6. Suppression is marked with an asterisk (*).

Rutherford Eligibility Rate – Measure Details

[No Data for Rutherford Eligibility Rate]

[No Data for Rutherford Eligibility Rate]



Note: Data values have been suppressed where the number of respondents is less than 6. Suppression is marked with an asterisk (*).

Diploma Examination Participation Rate – Measure Details

[No Data for Diploma Exam Participation Rate]

Graph of School Results

[No Data for Diploma Exam Participation Rate]

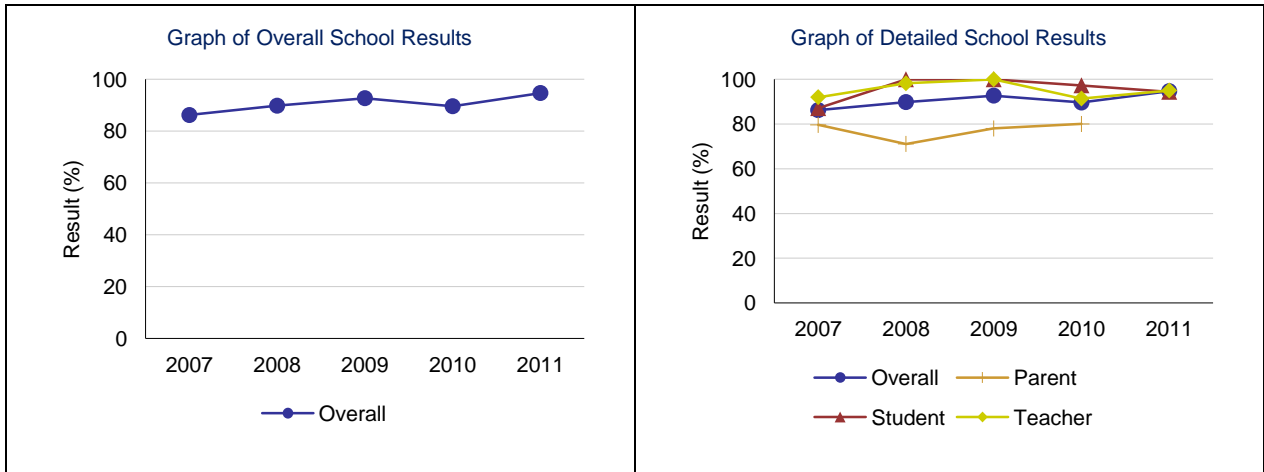
[No Data for Diploma Exam Participation Rate]

Note: Data values have been suppressed where the number of respondents is less than 6. Suppression is marked with an asterisk (*).

Citizenship – Measure Details

Percentages of teachers, parents and students who are satisfied that students model the characteristics of active citizenship.

	School					Authority					Province				
	2007	2008	2009	2010	2011	2007	2008	2009	2010	2011	2007	2008	2009	2010	2011
Overall	86.2	89.8	92.7	89.6	94.7	75.5	75.6	75.6	77.1	76.3	76.6	77.9	80.3	81.4	81.9
Teacher	92.0	98.2	100.0	91.4	95.0	90.9	91.0	89.9	90.9	89.2	89.9	90.6	91.8	93.0	92.7
Parent	79.6	71.1	78.0	80.0	*	70.5	69.5	70.6	70.3	71.2	72.6	74.7	77.4	78.5	78.6
Student	87.1	100.0	100.0	97.3	94.4	65.2	66.2	66.4	69.9	68.6	67.1	68.5	71.8	72.7	74.5

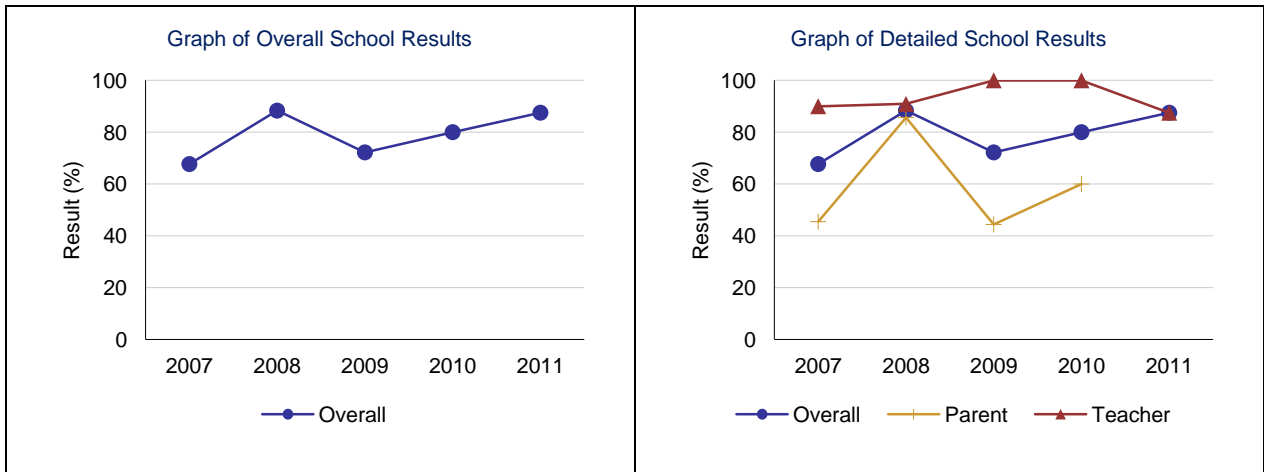


Note: Data values have been suppressed where the number of respondents is less than 6. Suppression is marked with an asterisk (*).

Work Preparation – Measure Details

Percentages of teachers and parents who agree that students are taught attitudes and behaviours that will make them successful at work when they finish school.

	School					Authority					Province				
	2007	2008	2009	2010	2011	2007	2008	2009	2010	2011	2007	2008	2009	2010	2011
Overall	67.7	88.3	72.2	80.0	87.5	78.3	77.5	75.6	76.0	71.8	77.1	80.1	79.6	79.9	80.1
Teacher	90.0	90.9	100.0	100.0	87.5	91.7	88.1	90.9	90.4	85.7	89.2	89.3	88.9	90.0	89.6
Parent	45.5	85.7	44.4	60.0	*	64.9	66.8	60.2	61.5	58.0	65.1	70.9	70.2	69.8	70.6

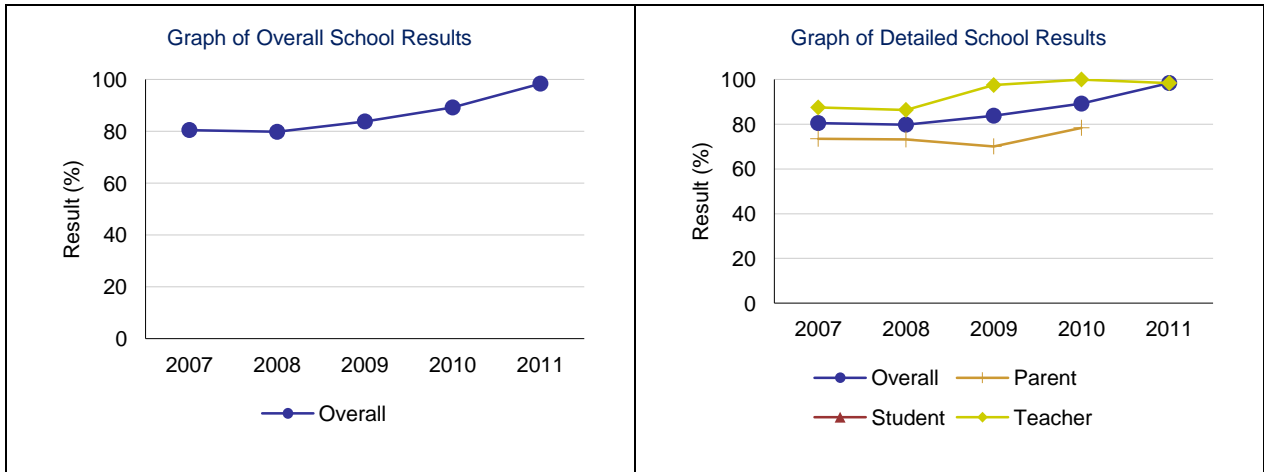


Note: Data values have been suppressed where the number of respondents is less than 6. Suppression is marked with an asterisk (*).

Program of Studies – Measure Details

Percentage of teachers, parents and students satisfied with the opportunity for students to receive a broad program of studies including fine arts, career, technology, and health and physical education.

	School					Authority					Province				
	2007	2008	2009	2010	2011	2007	2008	2009	2010	2011	2007	2008	2009	2010	2011
Overall	80.5	79.8	83.8	89.2	98.4	78.2	78.4	78.7	79.2	79.4	78.5	79.4	80.3	80.5	80.9
Teacher	87.5	86.4	97.5	100.0	98.4	89.5	90.0	87.7	90.1	86.7	85.7	86.4	86.8	87.7	87.6
Parent	73.5	73.2	70.1	78.4	*	74.3	75.5	77.5	74.0	75.9	76.9	77.6	78.7	78.0	78.3
Student	n/a	n/a	n/a	n/a	n/a	70.9	69.8	71.0	73.4	75.8	72.9	74.1	75.3	75.9	76.9

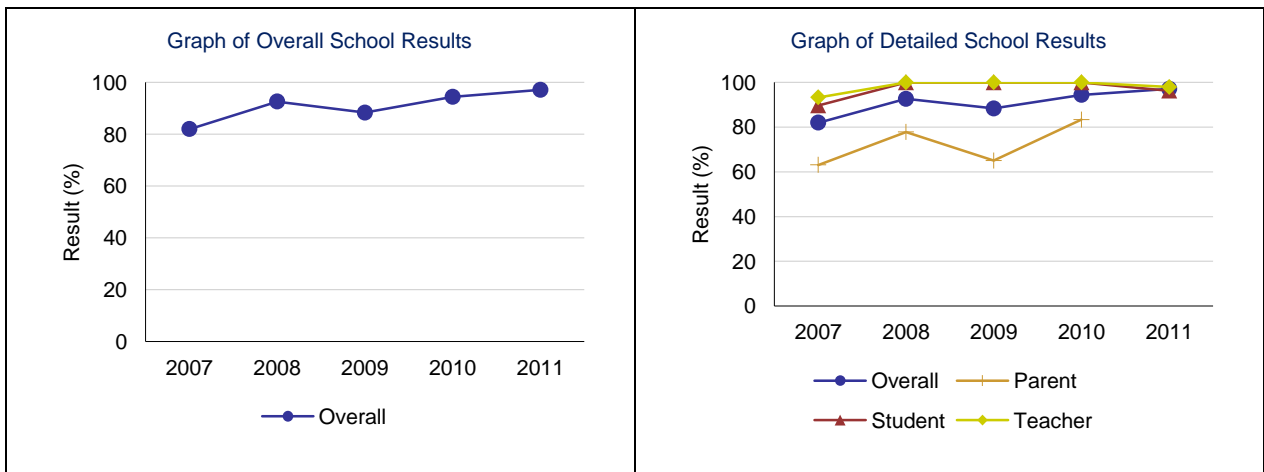


Note: Data values have been suppressed where the number of respondents is less than 6. Suppression is marked with an asterisk (*).

Education Quality – Measure Details

Percentage of teachers, parents and students satisfied with the overall quality of basic education.

	School					Authority					Province				
	2007	2008	2009	2010	2011	2007	2008	2009	2010	2011	2007	2008	2009	2010	2011
Overall	82.0	92.6	88.3	94.4	97.1	87.9	87.7	86.8	87.9	88.4	87.6	88.2	89.3	89.2	89.4
Teacher	93.3	100.0	100.0	100.0	97.9	96.0	95.9	95.4	96.4	96.1	94.7	94.9	95.3	95.6	95.5
Parent	63.1	77.8	65.0	83.3	*	80.8	82.2	79.8	79.6	82.9	81.8	83.0	84.4	83.9	84.2
Student	89.7	100.0	100.0	100.0	96.3	87.0	84.9	85.4	87.8	86.1	86.4	86.6	88.3	88.2	88.5

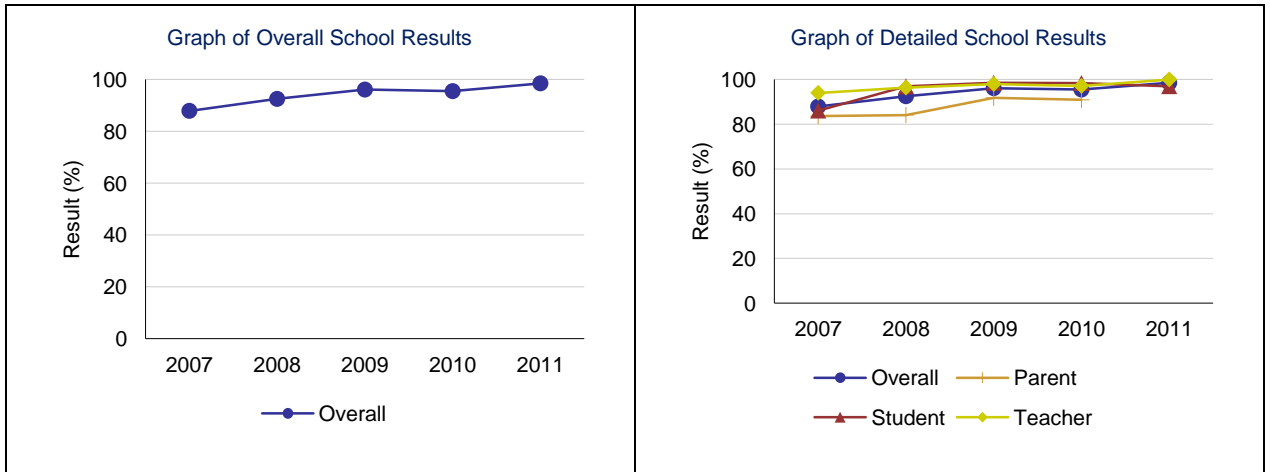


Note: Data values have been suppressed where the number of respondents is less than 6. Suppression is marked with an asterisk (*).

Safe and Caring – Measure Details

Percentage of teacher, parent and student agreement that: students are safe at school, are learning the importance of caring for others, are learning respect for others and are treated fairly in school.

	School					Authority					Province				
	2007	2008	2009	2010	2011	2007	2008	2009	2010	2011	2007	2008	2009	2010	2011
Overall	87.9	92.5	96.1	95.5	98.5	84.8	84.4	84.4	86.8	86.7	84.2	85.1	86.9	87.6	88.1
Teacher	94.0	96.4	98.0	97.1	100.0	93.6	93.4	93.2	94.2	94.3	92.6	93.1	93.8	94.4	94.5
Parent	83.6	84.1	91.8	90.9	*	82.1	81.7	80.8	83.1	82.6	81.7	83.2	85.3	86.1	86.6
Student	86.1	96.9	98.5	98.4	97.0	78.8	78.1	79.1	83.2	83.2	78.5	79.1	81.7	82.2	83.3

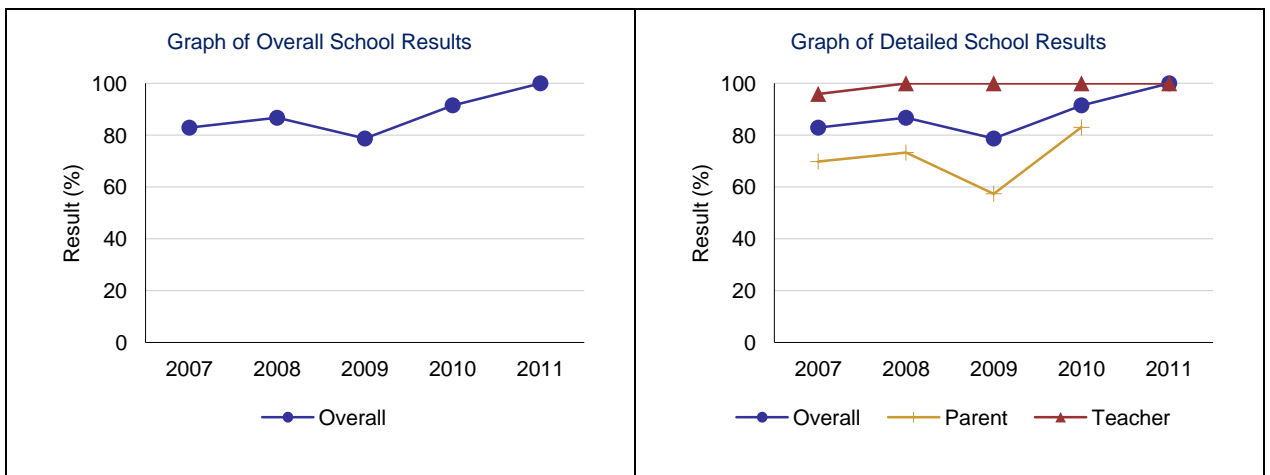


Note: Data values have been suppressed where the number of respondents is less than 6. Suppression is marked with an asterisk (*).

Parental Involvement – Measure Details

Percentage of teachers and parents satisfied with parental involvement in decisions about their child's education.

	School					Authority					Province				
	2007	2008	2009	2010	2011	2007	2008	2009	2010	2011	2007	2008	2009	2010	2011
Overall	82.9	86.7	78.7	91.5	100.0	81.4	79.6	78.5	77.1	78.5	77.5	78.2	80.1	80.0	79.9
Teacher	95.9	100.0	100.0	100.0	100.0	93.7	91.2	88.6	90.8	89.7	87.1	87.5	88.0	88.6	88.1
Parent	69.8	73.3	57.4	83.0	*	69.1	68.1	68.4	63.3	67.3	67.9	69.0	72.2	71.3	71.7

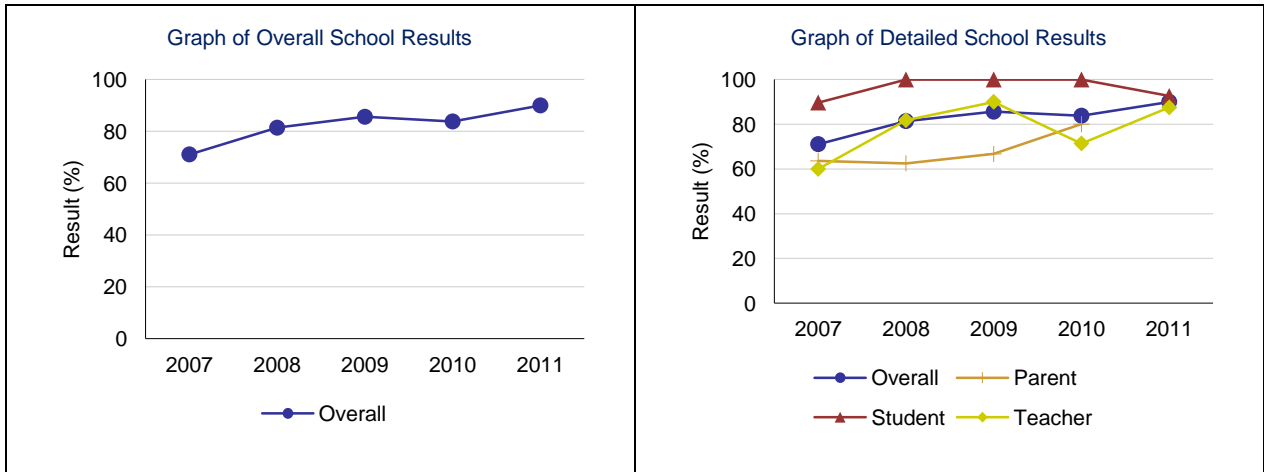


Note: Data values have been suppressed where the number of respondents is less than 6. Suppression is marked with an asterisk (*).

School Improvement – Measure Details

Percentages of teachers, parents and students indicating that their school and schools in their jurisdiction have improved or stayed the same the last three years.

	School					Authority					Province				
	2007	2008	2009	2010	2011	2007	2008	2009	2010	2011	2007	2008	2009	2010	2011
Overall	71.1	81.4	85.6	83.8	90.0	77.7	79.6	77.3	78.4	77.3	76.3	77.0	79.4	79.9	80.1
Teacher	60.0	81.8	90.0	71.4	87.5	76.4	84.8	83.1	78.7	75.2	74.5	75.6	78.2	80.8	80.1
Parent	63.6	62.5	66.7	80.0	*	76.4	75.6	70.8	74.4	75.0	75.1	75.9	78.1	77.0	77.3
Student	89.7	100.0	100.0	100.0	92.6	80.3	78.4	78.0	82.1	81.7	79.3	79.5	81.8	81.8	82.9



Note: Data values have been suppressed where the number of respondents is less than 6. Suppression is marked with an asterisk (*).