



Owl Power - Weekly Update

Week Of: September 30- October 4

780-942-2901

<https://www.ochreparkschool.ca>



Monday:	Tuesday:	Wednesday:	Thursday:	Friday:
Truth & Reconciliation Day No School 	 Earth Rangers Assembly @ 9:30 All Owl Families Welcome	 Fire Drill #2 in the AM		Kindergarten KA Day! Monthly Assembly @ 9:15 am All Owl Families Welcome Team Colour Day

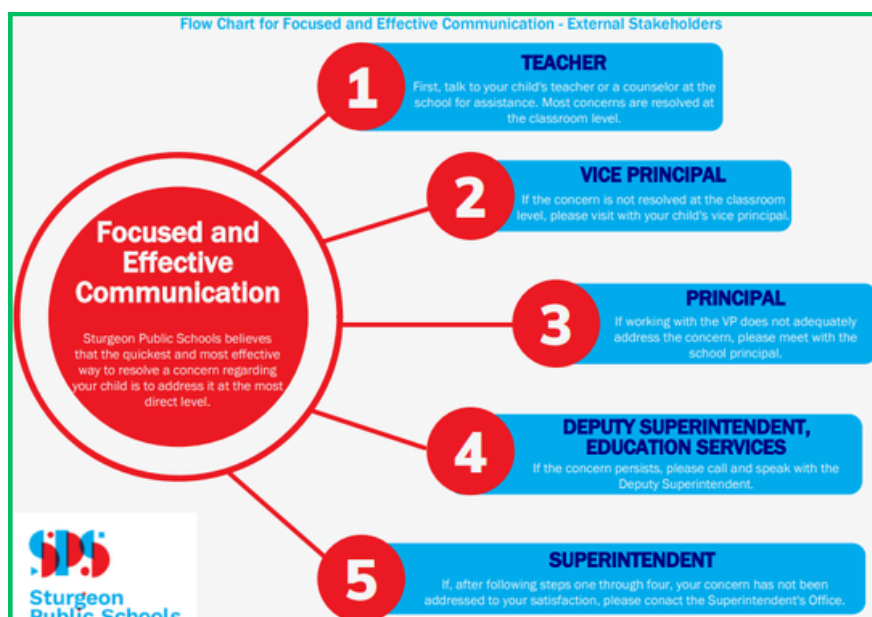
Ochre Park School Store open until October 4, 2024.
Click the link here: <https://www.promoplace.com/ochre>

Did you know?

- **October's Value of the Month is Honesty** - Our Little Owls will be exploring the concept of Honesty with a focus on being truthful in what one says and does.
- **Sturgeon Public School Division Effective Communication Policy:**

At Ochre Park School, we cultivate healthy relationships when problem-solving. Nurturing healthy relationships by considering stakeholder interests and a problem-solving approach to conflict resolution creates and maintains open lines of communication. It meets the needs of staff, parents, students and the community through building stronger relationships. Building healthy relationships is an ongoing process in which all parties commit to making relationships work—a winning approach for staff, parents, community, and especially students.

If you have a concern, or your child is experiencing a problem at school, please contact your child's teacher. Most problems are easily solved if the child's teacher is made aware of the problem. If a teacher is unable to aid in solving a problem at the classroom level, or the problem extends beyond the classroom, please contact the school administration.



Coming Up Quick!

- **School Picture Day!** - October 9 (Pre K, KA, Grades 1 - 4) & October 10 (KB and absent Owls)
- **Fire Safety Week** - October 7 - 11
- **Read In Week** - October 7 - 11
- **Borscht Making** - October 9 - 10
- **School Council Meeting** - October 10 @ 5:30 pm in the Learning Commons
- **Thanksgiving** - October 14 - no school
- **PD Day** - October 15 - no school



OP Driving Loop



Please continue to use the driving loop to drop your child off and pick your child up at the start and end of the day. You can go around the loop as many times as needed. You are also welcome to park in front of the school on the far side of the chain link fence (on the same side as the main road) or in front of the green field along the road.

Thank you for your continued care and diligence in keeping all of our Owl Community safe at morning drop-off and after school pick-up, as well as refraining from parking in front of and blocking our neighbour's driveways.

Outdoor Learning t Ochre Park School

Our Little Owls have spent a lot of time outside learning in nature. This week, our Little Owls have spent some time harvesting the vegetables they planted in the spring. We will be preparing the vegetables in early October to make Borscht that we will enjoy for lunch! From our outdoor classroom to our lunch tables - real world learning in action!





THANK YOU *Thank you so much* SO MUCH!

Ochre Park School has new sand!

A huge THANK YOU to Ron and **Sil Industrial Minerals** for their generous donation of new playground sand! Thank you to Chris and AJ from **Seal Tech Asphalt Services Ltd** for spreading the sand with a bobcat. Thank you to **Sturgeon Public School Division** for all their support in organizing the sand delivery. Thank you to some of our Redwater Community Members - the **Pioneers Hockey Club** who volunteered their time to help finish spreading sand into those tricky spots on our playground. Our Little Owls are very happy with all the sand! THANK YOU, THANK YOU, THANK YOU!

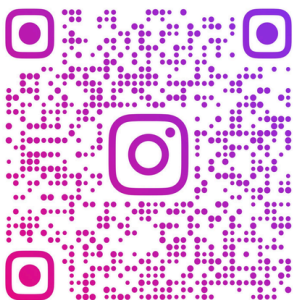


**Sil Industrial
Minerals**

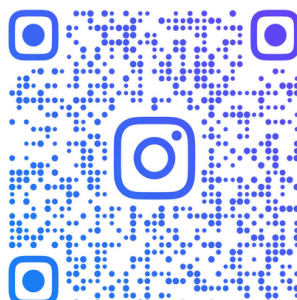
We're Ready.



Check this out!



POST SHARED ON SEPTEMBER 26
BY OCHREPARKSCHOOL



POST SHARED ON SEPTEMBER 21
BY OCHREPARKSCHOOL

