



Owl Power - Weekly Update



Week of: December 2 - 6, 2024

780-942-2901

<https://www.ochreparkschool.ca>

Monday:	Tuesday:	Wednesday:	Thursday:	Friday:
PD Day No School for Little Owls 	Christmas Store Shoppers 1G 3/4W KB 2/3T 2J  10 Days of Giving Food Bank Drive Begins December 3	Christmas Store Shoppers Pre-K 4G KA 	Christmas Store Shoppers Any Little Owls who missed their shopping day  School Council Meeting at 5:30pm All Owl Grown Ups Welcome to Attend!	Kindergarten K1 Day!  Christmas Sweater Day! Monthly Assembly at 9:15 All Owl Grown Ups Welcome to Attend!



Did You Know?



- **10 Days of Giving Food Bank Drive** - Ochre Park School is continuing our tradition of the 10 Days of Giving Food Bank Drive! Lead by the 3/4W class, we are asking Little Owls to bring in food donations to support the Redwater Food Bank. 3/4W has set a goal of collecting 1200 items! We will let you know how we do in reaching our goal!
- **Ochre Park Education Plan** - Ochre Park School has completed our three year education plan! The [Education Plan](#) has been linked to our school website. The three goals we are working on are:
 - 1) Students will increase their foundational Numeracy Skills and understanding.
 - 2) Students will engage in regular outdoor learning and place-based study, focusing on connecting students to their local environment and incorporating Indigenous perspectives on the land.
 - 3) Staff will create a school wide system for clearly communicating student learning and achievement in a meaningful and consistent way.

Keep your eye on the Owl Power for a more in depth explanation of each goal in the coming weeks.

Coming Up Quick!

- December 3 - 16 - 10 Days of Giving Food Bank Drive
- December 9 - 10 - Cooking Making and Decorating with Generations United
- **December 19 - Christmas Concert**
- December 20 - PJ Day!

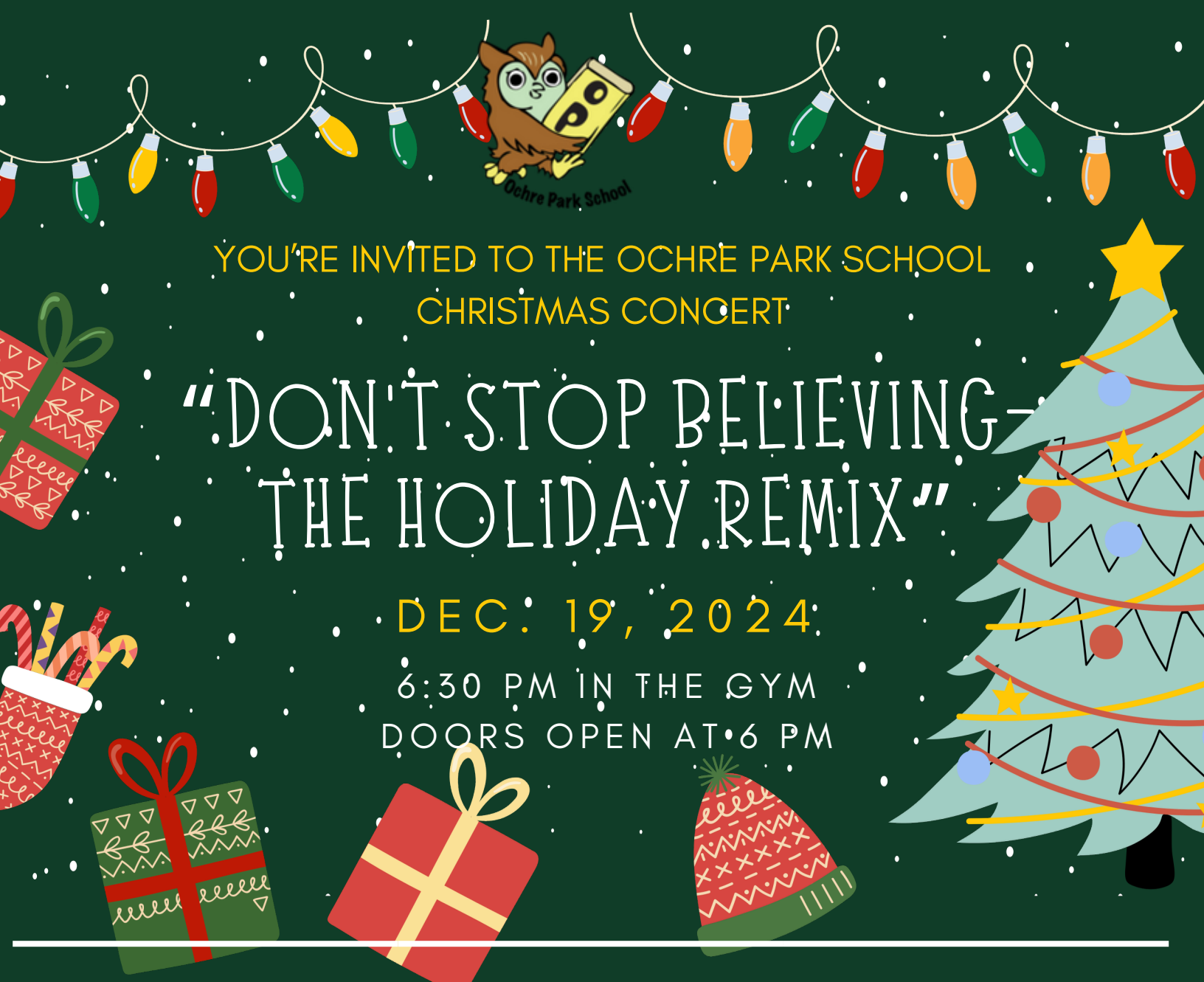


Friendly Reminder

Please help us keep all of our Little Owls safe and adequately supervised in the morning.

Please do not drop your Little Owl off before 8:35 am. Our morning supervisors are out at 8:35 am with the morning bell going at 8:40am.





YOU'RE INVITED TO THE OCHRE PARK SCHOOL CHRISTMAS CONCERT

"DON'T STOP BELIEVING- THE HOLIDAY REMIX"

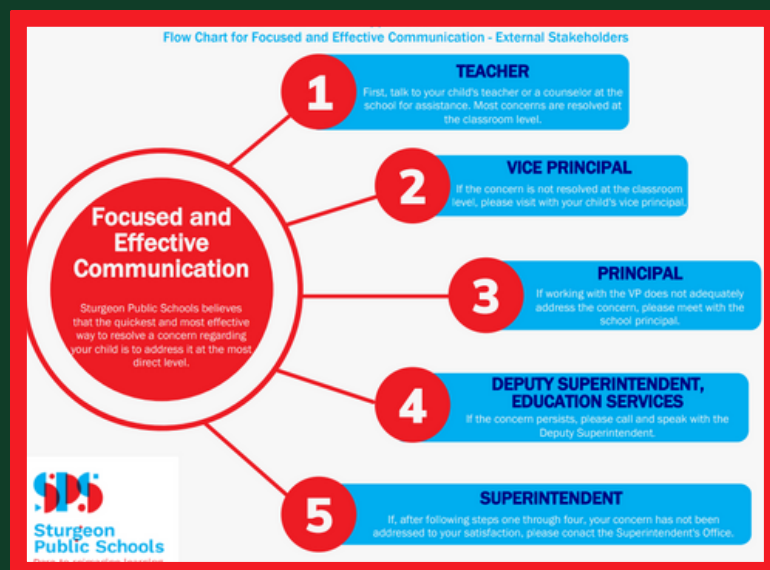
DEC. 19, 2024

6:30 PM IN THE GYM
DOORS OPEN AT 6 PM

SPSD Effective Communication Policy

At Ochre Park, we cultivate healthy relationships when problem-solving. Nurturing healthy relationships by considering stakeholder interests and a problem-solving approach to conflict resolution creates and maintains open lines of communication. It meets the needs of staff, parents, students, and the community through building stronger relationships. Building healthy relationships is an ongoing process in which all parties commit to making relationships work - a winning approach for everyone.

If you have a concern, or your child is experiencing a problem at school, please contact your child's teacher. Most problems are easily solved if the child's teacher is aware of the problem. If a teacher is unable to aid in solving a problem at the classroom level, or the problem extends beyond the classroom, please contact the school administration.





Friendly Reminder

- As the weather turns colder, please ensure you send your child to school in proper winter wear. As per Sturgeon Public School Division policy, **we go outside to a temperature of -25 degrees celsius with windchill.** (Click below to see policies)
 - [Inclement Weather](#)
 - [Inclement Weather Decisions for Schools](#)
- Please ensure you label **all** your child's winter wear, including their boots. We have lots of Little Owls with the same winter wear. We want to avoid any mix-ups.



OP Driving Loop



Please continue to use the driving loop to drop your child off and pick your child up at the start and end of the day. You can go around the loop as many times as needed. You are also welcome to park in front of the school on the far side of the chain link fence (on the same side as the main road) or in front of the green field along the road.

Thank you for your continued care and diligence in keeping all of our Owl Community safe at morning drop-off and after school pick-up, as well as refraining from parking in front of and blocking our neighbour's driveways.