








Owl Power - Weekly Update

Week of: April 14 - 18, 2025

780-942-2901

<https://www.ochreparkschool.ca>



Monday:	Tuesday:	Wednesday:	Thursday:	Friday:
 Registration for 2025-2026 School Year Open! Register your Little Owl and help us in our planning for next year!	Paska Making with Generations United!  Choir Students Field Trip to Landing Trail -PM  Redwater School Grade 4 Family Transition Meeting at 5:45pm at RWS		 Renegade Friends here for Fun Day! Wear your Team Colour Shirt!	 Good Friday - No School

Registration is Open!

We want to be
OWLS!

Registration for 2025-2026 School Year: Have you registered your Little Owl for next year? Did you know you need to fill out the registration form yearly? Please head over to our website and register your Little Owl if you haven't done so already. The more registrations we know about now, the better we can plan for the Fall. If you have any questions, please call the office and we will be happy to help you out!

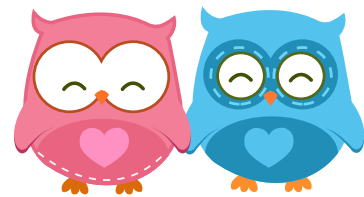


Upcoming Events

- April 21 - Easter Monday - No School
- April 23 - 24 - Spring Pictures & Kindergarten Grad Photos
- April 25 - Sturgeon Night of Fine Arts Event at Sturgeon Composite High School
3:30 - 6:00 pm
- Team Colour Day
- April 28 - Sturgeon Night of Music Event - Winspear Centre
- April 28 - May 2 - Dance Play Residency Program
- April 29 - May 1 - Scholastic Book Fair (running during the school day)
- April 30 - Family Read In @ 2:30pm (more information to come)
- May 2 - Monthly Assembly @ 2:00 pm
- May 7 - Hats on for Mental Health Day
- May 9 - Grade 4 Leadership Mental Health Fair
- May 15 - School Wide Breakfast
- May 16 - PD Day - no school
- May 19 - Victoria Day - no school

COMING
SOON

Friendly Reminders



Please help us keep our Little Owls safe and adequately supervised by dropping them off no earlier than 8:35 am. The morning entry bell goes at 8:40 am. **If you arrive after 8:40 am, please bring your child into the school to sign them in at the office.** Our doors are all locked and you will need to call into the school to have someone open the front door. This is to ensure the security of the building as we cannot monitor the front door for the full day.



A note about our Driving Loop



Please continue to use the driving loop (indicated by the yellow arrows in the image below) to drop your child off and pick your child up at the start and end of the day. **You can go around the loop as many times as needed** and are asked to do so while you wait for your Little Owl to arrive at the pick-up location (indicated by the green smiley face in the image below) at the end of the day.

If you are dropping off your Little Owl and are walking them to their door, you are welcome to park in front of the school on the far side of the chain link fence (on the same side as the main road) or in front of the green field along the road. **Please refrain from parking in non-parking lot stalls in our parking lot as it can block traffic and clear lines of sight.**

Safety is our top priority and we want to ensure that all of our Little Owls can get to where they need to be promptly at the start and end of the day.

Thank you for your continued care and diligence in keeping all of our Owl Community safe at morning drop-off and after school pick-up, as well as refraining from parking in front of and blocking our neighbour's driveways.

