



Owl Power - Weekly Update

Week of: April 21 - 25, 2025

780-942-2901

<https://www.ochreparkschool.ca>



Monday:	Tuesday:	Wednesday:	Thursday:	Friday:
 Easter Monday No School		 Spring Pictures & Kinder Grad Pictures	 Spring Pictures & Kinder Grad Pictures	Kindergarten K1 Day! Team Colour Day  Renegade Friends here for Fun Day!  Sturgeon Public School Division Night of Fine Arts 3:30pm - 6:00pm at Sturgeon Composite High School

Registration for 2025-2026 School Year Open!
Register your Little Owl and help us in our planning for next year!

Parent Volunteers, Please Come Read with Us!



Wednesday, April 30 at 2:30 pm, we will be hosting a Parent Read In event! We are inviting our Owl Grown Ups from home to come to Ochre Park and read with us from 2:30 pm - 3:00 pm! We will spread out through our school and enjoy the fun and adventure that books offer. If you are able to come, please let your child's teacher know! We look forward to welcoming everyone!

Thank You!

A huge thank you goes out to Deb & Dale Croswell at DDC Sand, Gravel and Concrete for their generous \$850 donation. We used the money to purchase brand new walkie talkies for our entire staff! Walkie talkies are used by our team as a universal support ensuring clear, timely communication and safety for everyone in the building.

Thank you, thank you, thank you!

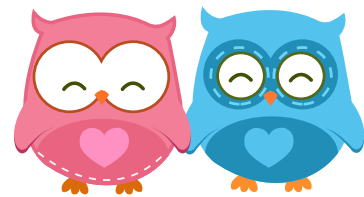


Upcoming Events

- April 28 - Sturgeon Night of Music Event - Winspear Centre
- April 28 - May 2 - Dance Play Residency Program
- April 29 - May 1 - Scholastic Book Fair (running during the school day)
- April 30 - Family Read In @ 2:30pm (more information to come)
- May 2 - Monthly Assembly @ 2:00 pm
- May 7 - Hats on for Mental Health Day
- May 9 - Grade 4 Leadership Mental Health Fair
- May 15 - School Wide Breakfast
- May 16 - PD Day - no school
- May 19 - Victoria Day - no school

COMING
SOON

Friendly Reminders



Please help us keep our Little Owls safe and adequately supervised by dropping them off no earlier than 8:35 am. The morning entry bell goes at 8:40 am. **If you arrive after 8:40 am, please bring your child into the school to sign them in at the office.** Our doors are all locked and you will need to call into the school to have someone open the front door. This is to ensure the security of the building as we cannot monitor the front door for the full day.



A note about our Driving Loop



Please continue to use the driving loop (indicated by the yellow arrows in the image below) to drop your child off and pick your child up at the start and end of the day. **You can go around the loop as many times as needed** and are asked to do so while you wait for your Little Owl to arrive at the pick-up location (indicated by the green smiley face in the image below) at the end of the day.

If you are dropping off your Little Owl and are walking them to their door, you are welcome to park in front of the school on the far side of the chain link fence (on the same side as the main road) or in front of the green field along the road. **Please refrain from parking in non-parking lot stalls in our parking lot as it can block traffic and clear lines of sight.**

Safety is our top priority and we want to ensure that all of our Little Owls can get to where they need to be promptly at the start and end of the day.

Thank you for your continued care and diligence in keeping all of our Owl Community safe at morning drop-off and after school pick-up, as well as refraining from parking in front of and blocking our neighbour's driveways.

