





Owl Power - Weekly Update



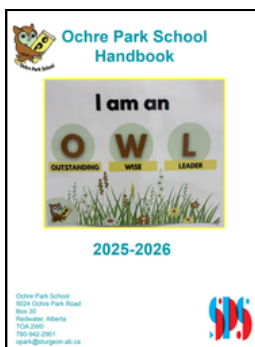
September 15- September 19, 2025

780-942-2901

<https://www.ochreparkschool.ca>

Monday:	Tuesday:	Wednesday:	Thursday:	Friday:
 PD Day No School		Kindergarten Day!		Kindergarten Day!  Team Colour Day!
Alberta Education Literacy & Numeracy Screener Testing				

Did you know?



Our [Ochre Park School Handbook](https://www.ochreparkschool.ca) has been updated for the 2025-2026 school year. Located on our school website (www.ochreparkschool.ca) this document contains important information about our school including:

- school philosophy
- bell schedule
- code of conduct
- emergency preparedness
- violence & threat risk assessment
- inclement weather
- attendance
- bussing
- technology
- volunteering
- PowerSchool
- general information
-and more!

Coming Up Quick!

- Terry Fox Run - September 25 (volunteers required)
- Orange Shirt Day - September 29
- Truth and Reconciliation Day - no school - September 30
- School Pictures- October 8 & 9 (volunteers required)



Terry Fox Run - September 25

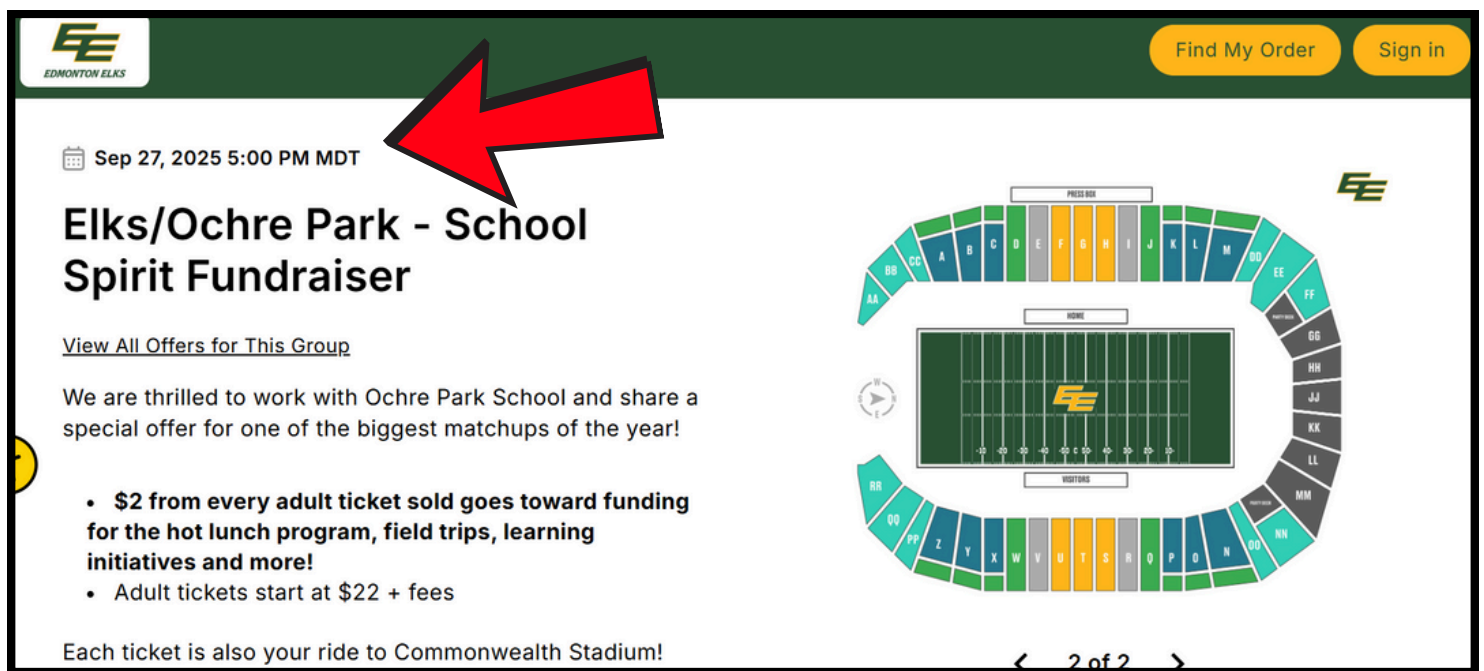
We are looking for parent volunteers to help us with our Terry Fox Run! We need parents to line the path, help direct us on the correct route, and cheer us on. (Please see email).

If you are able to help, please call into the office at 780-942-2901 or let your child's teacher know.

You will need a **current Criminal Record Check** on file at the school. Please contact the office so we can fill out a form for you to take to the RCMP. The Redwater RCMP processes Criminal Record Checks on Tuesdays and Wednesdays.

Attention All Owl Families!

An opportunity presented by our School Council!



The screenshot shows the Edmonton Elks website with a fundraiser for Ochre Park School. A red arrow points to the event details. The event is titled "Elks/Ochre Park - School Spirit Fundraiser" and is scheduled for September 27, 2025, at 5:00 PM MDT. The page includes a "View All Offers for This Group" link and a description of the fundraiser. A seating chart for Commonwealth Stadium is also visible.

Edmonton Elks

[Find My Order](#) [Sign in](#)

Sep 27, 2025 5:00 PM MDT

Elks/Ochre Park - School Spirit Fundraiser

[View All Offers for This Group](#)

We are thrilled to work with Ochre Park School and share a special offer for one of the biggest matchups of the year!

- \$2 from every adult ticket sold goes toward funding for the hot lunch program, field trips, learning initiatives and more!
- Adult tickets start at \$22 + fees

Each ticket is also your ride to Commonwealth Stadium!

Edmonton Elks

SEATING CHART: PRESEASON, HOME, VISITING

< 2 of 2 >

Click [here](#) for more information!



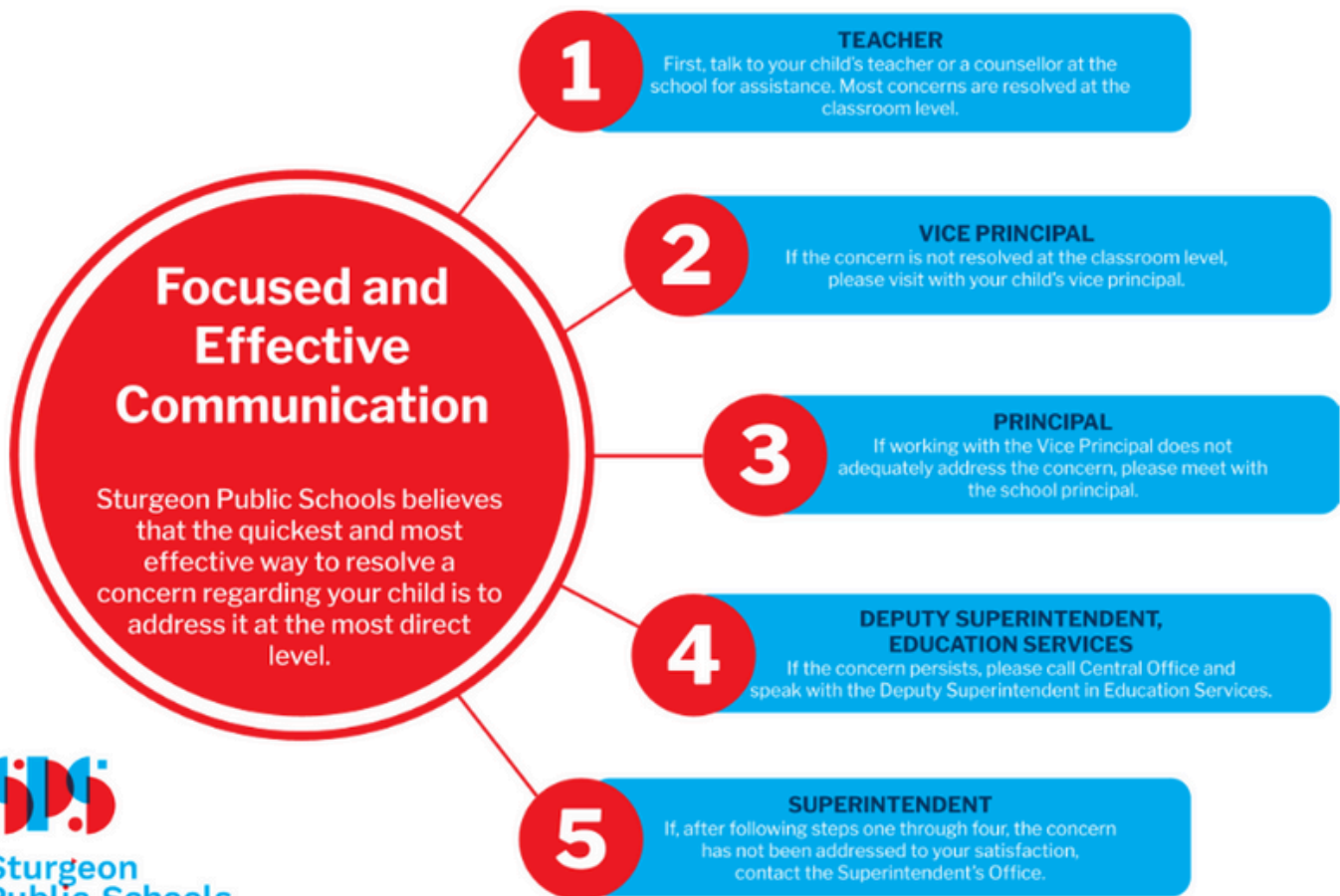


SPSD Focused and Effective Communication Procedure

[AP 221](#)

Appendix A

Flow Chart for Focused and Effective Communication - External Stakeholders





A note about our Driving Loop



Please continue to use the driving loop (indicated by the yellow arrows in the image below) to drop your child off and pick your child up at the start and end of the day. **You can go around the loop as many times as needed and are asked to do so while you wait for your Little Owl to arrive at the pick-up location** (indicated by the green smiley face in the image below) at the end of the day.

If you are dropping off your Little Owl and are walking them to their door, you are welcome to park in front of the school on the far side of the chain link fence (on the same side as the main road) or in front of the green field along the road. **Please refrain from parking in the school parking lot as it can block traffic and clear lines of sight.**

Safety is our top priority and we want to ensure that all of our Little Owls can get to where they need to be promptly at the start and end of the day. **Please note- this is a ONE WAY driving loop and path through the parking lot - do not drive it in the opposite direction.** The entrance is at the start of the parking lot where staff cars are parked.

Thank you for your continued care and diligence in keeping all of our Owl Community safe at morning drop-off and after school pick-up, as well as refraining from parking in front of and blocking our neighbour's driveways.



Learning,
Together.